

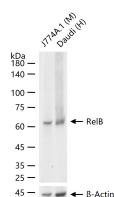
bsm-62968R**[Primary Antibody]****RelB Recombinant Rabbit mAb****BioSS**
ANTIBODIES

www.bioss.com.cn

sales@bioss.com.cn

techsupport@bioss.com.cn

400-901-9800

— DATASHEET —**Host:** Rabbit**Isotype:** IgG**Clonality:** Recombinant**CloneNo.:** 14D9**GeneID:** 5971**SWISS:** Q01201**Target:** RelB**Immunogen:** A synthesized peptide derived from human RelB: 515-579/579.**Purification:** affinity purified by Protein A**Storage:** 10mM phosphate buffered saline(pH 7.4) with 150mM sodium chloride, 0.05% BSA, 0.02% Proclin300 and 50% glycerol. Store at 4°C for short term. Store at -20°C for long term. Avoid repeated freeze/thaw cycles.**Background:** NF-kappa-B is a pleiotropic transcription factor which is present in almost all cell types and is involved in many biological processes such as inflammation, immunity, differentiation, cell growth, tumorigenesis and apoptosis. NF-kappa-B is a homo- or heterodimeric complex formed by the Rel-like domain-containing proteins RELA/p65, RELB, NFkB1/p105, NFkB1/p50, REL and NFkB2/p52.**Applications:** **WB** (1:500-1:2000)**IHC-P** (1:100-1:200)**IHC-F** (1:100-1:200)**IF** (1:50-1:200)**Flow-Cyt** (1:20-1:100)**ICC/IF** (1:50-1:200)**IP** (1:20-1:50)**Reactivity:** Human, Mouse
(predicted: Rat)**Predicted
MW.:** 62**Subcellular
Location:** Cytoplasm ,Nucleus**— VALIDATION IMAGES —**

25 ug total protein per lane of various lysates (see on figure) probed with RelB monoclonal antibody, unconjugated (bsm-62968R) at 1:2000 dilution and 4°C overnight incubation. Followed by conjugated secondary antibody incubation at r.t. for 60 min.