

**bsm-62955R**

**[ Primary Antibody ]**

**Bioss**  
ANTIBODIES

www.bioss.com.cn

sales@bioss.com.cn

techsupport@bioss.com.cn

400-901-9800

## PKC epsilon Recombinant Rabbit mAb

### DATASHEET

**Host:** Rabbit

**Clonality:** Recombinant

**GeneID:** 5581

**Target:** PKC epsilon

**Immunogen:** A synthesized peptide derived from human PKC epsilon: 550-600.

**Purification:** affinity purified by Protein A

**Storage:** 10mM phosphate buffered saline(pH 7.4) with 150mM sodium chloride, 0.05% BSA, 0.02% Proclin300 and 50% glycerol. Store at 4°C for short term. Store at -20°C for long term. Avoid repeated freeze/thaw cycles.

**Background:** Calcium-independent, phospholipid- and diacylglycerol (DAG)-dependent serine/threonine-protein kinase that plays essential roles in the regulation of multiple cellular processes linked to cytoskeletal proteins, such as cell adhesion, motility, migration and cell cycle, functions in neuron growth and ion channel regulation, and is involved in immune response, cancer cell invasion and regulation of apoptosis.

**Isotype:** IgG

**CloneNo.:** 2B1

**SWISS:** Q02156

**Applications:** WB (1:500-2000)

**IHC-P** (1:50-200)

**IHC-F** (1:50-200)

**IF** (1:50-200)

**Flow-Cyt** (1:50-100)

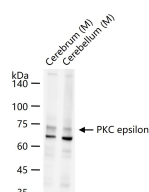
**ICC/IF** (1:50-200)

**Reactivity:** Human, Mouse, Rat

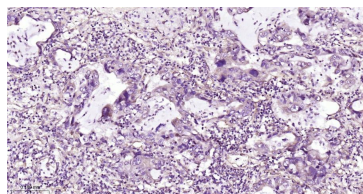
**Predicted  
MW.:** 84

**Subcellular  
Location:** Cell membrane ,Cytoplasm  
Nucleus

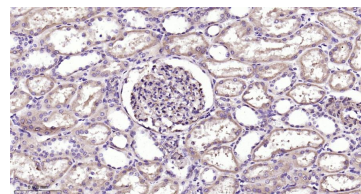
### VALIDATION IMAGES



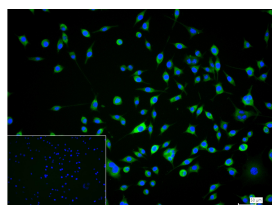
25 ug total protein per lane of various lysates (see on figure) probed with PKC epsilon monoclonal antibody, unconjugated (bsm-62955R) at 1:2000 dilution and 4°C overnight incubation. Followed by conjugated secondary antibody incubation at r.t. for 60 min.



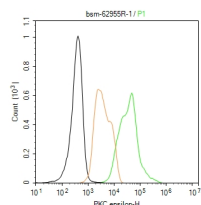
Paraformaldehyde-fixed, paraffin embedded Human Lung Cancer; Antigen retrieval by boiling in sodium citrate buffer (pH6.0) for 15 min; Antibody incubation with PKC epsilon Monoclonal Antibody, Unconjugated(bsm-62955R) at 1:200 overnight at 4°C, followed by conjugation to the bs-0295G-HRP and DAB (C-0010) staining.



Paraformaldehyde-fixed, paraffin embedded Human Kidney; Antigen retrieval by boiling in sodium citrate buffer (pH6.0) for 15 min; Antibody incubation with PKC epsilon Monoclonal Antibody, Unconjugated(bsm-62955R) at 1:200 overnight at 4°C, followed by conjugation to the bs-0295G-HRP and DAB (C-0010) staining.



4% Paraformaldehyde-fixed SH-SY5Y (H) cell; Triton X-100 at r.t. for 20 min; Antibody incubation with (PKC epsilon) monoclonal Antibody, unconjugated (bsm-62955R) 1:100, 90 min at 37°C; followed by conjugated Goat Anti-Rabbit IgG antibody (green, bs-60295G-BF488) at 37°C for 90 min, DAPI (blue, C02-04002) was used to stain the cell nuclei. PBS instead of the primary antibody was used as the blank control.



The SH-SY5Y (H) cells were fixed with 4% PFA (10 min at r.t.) and then permeabilized with 90% ice-cold methanol for 20 min at -20°C, the cells then were incubated in 5%BSA to block non-specific protein-protein interactions (30 min at r.t.), followed by secondary antibody incubation for 40 min at room temperature. Primary Antibody (green):Rabbit Anti-PKC epsilon antibody (bsm-62955R,1:1400); Isotype Control (orange): Rabbit IgG (bs-0295P). Blank control (black): PBS. Acquisition of 20,000 events was performed.

Important Note: This product as supplied is intended for research use only, not for use in human, therapeutic or diagnostic applications.