

bsm-62950R

[Primary Antibody]

PREPL Recombinant Rabbit mAb

BioSS
ANTIBODIES

www.bioss.com.cn

sales@bioss.com.cn

techsupport@bioss.com.cn

400-901-9800

— DATASHEET —

Host: Rabbit

Isotype: IgG

Clonality: Recombinant

CloneNo.: 11B10

GeneID: 9581

SWISS: Q4J6C6

Target: PREPL

Immunogen: A synthesized peptide derived from human PREPL: 601-685.

Purification: affinity purified by Protein A

Storage: 10mM phosphate buffered saline(pH 7.4) with 150mM sodium chloride, 0.05% BSA, 0.02% Proclin300 and 50% glycerol. Store at 4°C for short term. Store at -20°C for long term. Avoid repeated freeze/thaw cycles.

Background: Serine peptidase whose precise substrate specificity remains unclear. Does not cleave peptides after a arginine or lysine residue.

Applications: **WB** (1:500-2000)

IHC-P (1:100-500)

IHC-F (1:100-500)

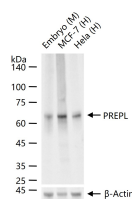
IF (1:100-500)

IP (1:20-50)

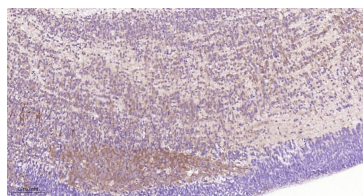
Reactivity: Human, Mouse, Rat

Predicted MW.: 84

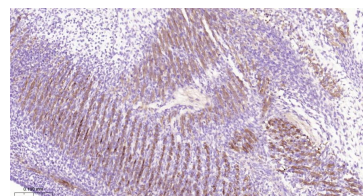
— VALIDATION IMAGES —



25 ug total protein per lane of various lysates (see on figure) probed with PREPL monoclonal antibody, unconjugated (bsm-62950R) at 1:1000 dilution and 4°C overnight incubation. Followed by conjugated secondary antibody incubation at r.t. for 60 min.



Paraformaldehyde-fixed, paraffin embedded Rat Embryo; Antigen retrieval by boiling in sodium citrate buffer (pH6.0) for 15 min; Antibody incubation with PREPL Monoclonal Antibody, Unconjugated(bsm-62950R) at 1:200 overnight at 4°C, followed by conjugation to the bs-0295G-HRP and DAB (C-0010) staining.



Paraformaldehyde-fixed, paraffin embedded Mouse Embryo; Antigen retrieval by boiling in sodium citrate buffer (pH6.0) for 15 min; Antibody incubation with PREPL Monoclonal Antibody, Unconjugated(bsm-62950R) at 1:200 overnight at 4°C, followed by conjugation to the bs-0295G-HRP and DAB (C-0010) staining.