

**bsm-62949R**

**[ Primary Antibody ]**

**Bioss**  
ANTIBODIES

www.bioss.com.cn

sales@bioss.com.cn

techsupport@bioss.com.cn

400-901-9800

## PREPL Recombinant Rabbit mAb

### DATASHEET

**Host:** Rabbit

**Clonality:** Recombinant

**GeneID:** 9581

**Target:** PREPL

**Isotype:** IgG

**CloneNo.:** 2B7

**SWISS:** Q4J6C6

**Immunogen:** A synthesized peptide derived from human PREPL: 50-100.

**Purification:** affinity purified by Protein A

**Storage:** 10mM phosphate buffered saline(pH 7.4) with 150mM sodium chloride, 0.05% BSA, 0.02% Proclin300 and 50% glycerol. Store at 4°C for short term. Store at -20°C for long term. Avoid repeated freeze/thaw cycles.

**Background:** Serine peptidase whose precise substrate specificity remains unclear. Does not cleave peptides after a arginine or lysine residue.

**Applications:** IHC-P (1:50-200)

**Flow-Cyt** (1:50-100)

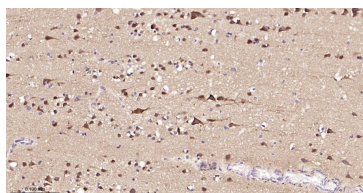
**ICC/IF** (1:50-200)

**IP** (1:20-50)

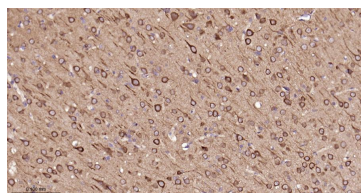
**Reactivity:** Human, Mouse, Rat

**Predicted MW.:** 84

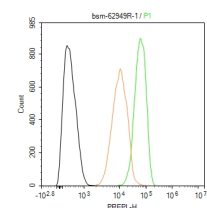
### VALIDATION IMAGES



Paraformaldehyde-fixed, paraffin embedded Human Cerebrum; Antigen retrieval by boiling in sodium citrate buffer (pH6.0) for 15 min; The section was incubated with PREPL Monoclonal Antibody, Unconjugated (bsm-62949R) at 1:200 overnight at 4°C, followed by conjugation to the bs-0295G-HRP and DAB (C-0010) staining.



Paraformaldehyde-fixed, paraffin embedded Rat Cerebrum; Antigen retrieval by boiling in sodium citrate buffer (pH6.0) for 15 min; The section was incubated with PREPL Monoclonal Antibody, Unconjugated (bsm-62949R) at 1:200 overnight at 4°C, followed by conjugation to the bs-0295G-HRP and DAB (C-0010) staining.



The MCF-7 (H) cells were fixed with 4% PFA (10 min at r.t.) and then permeabilized with 90% ice-cold methanol for 20 min at -20°C, the cells then were incubated in 5%BSA to block non-specific protein-protein interactions (30 min at r.t.), followed by secondary antibody incubation for 40 min at room temperature. Primary Antibody (green):Rabbit Anti-PREPL antibody (bsm-62949R,1:100); Isotype Control (orange): Rabbit IgG (bs-0295P). Blank control (black): PBS. Acquisition of 20,000 events was performed.