

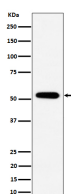
bsm-62948R**[Primary Antibody]****Bioss**
ANTIBODIES

www.bioss.com.cn

sales@bioss.com.cn

techsupport@bioss.com.cn

400-901-9800

PPP2R5E Recombinant Rabbit mAb**— DATASHEET —****Host:** Rabbit**Isotype:** IgG**Clonality:** Recombinant**GeneID:** 5529**SWISS:** Q16537**Target:** PPP2R5E**Immunogen:** A synthesized peptide derived from human PPP2R5E: 401-467.**Purification:** affinity purified by Protein A**Storage:** 10mM phosphate buffered saline(pH 7.4) with 150mM sodium chloride, 0.05% BSA, 0.02% Proclin300 and 50% glycerol.
Store at 4°C for short term. Store at -20°C for long term. Avoid repeated freeze/thaw cycles.**Background:** The B regulatory subunit might modulate substrate selectivity and catalytic activity, and also might direct the localization of the catalytic enzyme to a particular subcellular compartment.**Applications:** WB (1:1000-1:2000)**IHC-P** (1:100-1:200)**IHC-F** (1:100-1:200)**IF** (1:50-1:200)**ICC/IF** (1:50-1:200)**IP** (1:20-1:50)**Reactivity:** Human**Predicted
MW.:** 55**Subcellular
Location:** Cytoplasm**— VALIDATION IMAGES —**

Western blot analysis of 293 cell lysate. Using PPP2R5E (bsm-62948R) monoclonal antibody at 1:1000 dilution and 4°C overnight incubation. Followed by conjugated secondary antibody incubation at r.t. for 60 min.