

**bsm-62947R****[ Primary Antibody ]**

www.bioss.com.cn

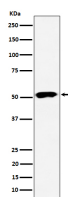
sales@bioss.com.cn

techsupport@bioss.com.cn

400-901-9800

**PPP2R5E Recombinant Rabbit mAb****— DATASHEET —**

<b>Host:</b> Rabbit	<b>Isotype:</b> IgG	<b>Applications:</b> WB (1:1000-1:2000) ICC/IF (1:50-1:200)  <b>Reactivity:</b> Human, Mouse, Rat   <b>Predicted MW.:</b> 55  <b>Subcellular Location:</b> Cytoplasm
<b>Clonality:</b> Recombinant		
<b>GeneID:</b> 5529	<b>SWISS:</b> Q16537	
<b>Target:</b> PPP2R5E		
<b>Immunogen:</b> A synthesized peptide derived from human PPP2R5E: 1-50.		
<b>Purification:</b> affinity purified by Protein A		
<b>Storage:</b> 10mM phosphate buffered saline(pH 7.4) with 150mM sodium chloride, 0.05% BSA, 0.02% Proclin300 and 50% glycerol. Store at 4°C for short term. Store at -20°C for long term. Avoid repeated freeze/thaw cycles.		
<b>Background:</b> The B regulatory subunit might modulate substrate selectivity and catalytic activity, and also might direct the localization of the catalytic enzyme to a particular subcellular compartment.		

**— VALIDATION IMAGES —**

Western blot analysis of 293 cell lysate. Using PPP2R5E (bsm-62947R) monoclonal antibody at 1:1000 dilution and 4°C overnight incubation. Followed by conjugated secondary antibody incubation at r.t. for 60 min.