

**bsm-62938R****[ Primary Antibody ]****BioSS**  
**ANTIBODIES**

www.bioss.com.cn

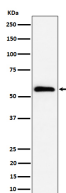
sales@bioss.com.cn

techsupport@bioss.com.cn

400-901-9800

**PNKP Recombinant Rabbit mAb****— DATASHEET —**

<b>Host:</b> Rabbit	<b>Isotype:</b> IgG	<b>Applications:</b> <b>WB</b> (1:1000-2000) <b>IHC-P</b> (1:100-200) <b>IHC-F</b> (1:100-200) <b>IF</b> (1:100-200) <b>IP</b> (1:20-50)  <b>Reactivity:</b> Human   <b>Predicted MW.:</b> 57  <b>Subcellular Location:</b> Nucleus
<b>Clonality:</b> Recombinant		
<b>GeneID:</b> 11284	<b>SWISS:</b> Q96T60	
<b>Target:</b> PNKP		
<b>Immunogen:</b> A synthesized peptide derived from human PNKP: 460-490.		
<b>Purification:</b> affinity purified by Protein A		
<b>Storage:</b> 10mM phosphate buffered saline(pH 7.4) with 150mM sodium chloride, 0.05% BSA, 0.02% Proclin300 and 50% glycerol. Store at 4°C for short term. Store at -20°C for long term. Avoid repeated freeze/thaw cycles.		
<b>Background:</b> Plays a key role in the repair of DNA damage, functioning as part of both the non-homologous end-joining (NHEJ) and base excision repair (BER) pathways.		

**— VALIDATION IMAGES —**

Western blot analysis of HeLa cell lysate. Using PNKP (bsm-62938R) monoclonal antibody at 1:1000 dilution and 4°C overnight incubation. Followed by conjugated secondary antibody incubation at r.t. for 60 min.