

bsm-62936R**[Primary Antibody]****BioSS**
ANTIBODIES

www.bioss.com.cn

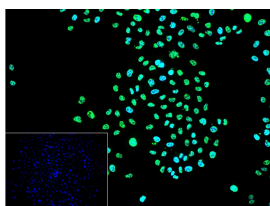
sales@bioss.com.cn

techsupport@bioss.com.cn

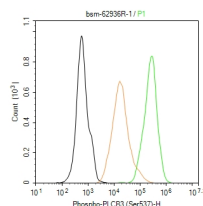
400-901-9800

phospho-PLCB3 (Ser537) Recombinant Rabbit mAb**— DATASHEET —**

Host: Rabbit	Isotype: IgG	Applications: WB (1:500-2000) Flow-Cyt (1:50-100) ICC/IF (1:50-200) Reactivity: Human Predicted MW.: 139 Subcellular Location: Cell membrane
Clonality: Recombinant		
GeneID: 5331	SWISS: Q01970	
Target: PLCB3 (Ser537)		
Immunogen: A synthesized peptide derived from human PLCB3 around the phosphorylation site of S537: PQR-pS-LGD.		
Purification: affinity purified by Protein A		
Storage: 10mM phosphate buffered saline(pH 7.4) with 150mM sodium chloride, 0.05% BSA, 0.02% Proclin300 and 50% glycerol. Store at 4°C for short term. Store at -20°C for long term. Avoid repeated freeze/thaw cycles.		
Background: The production of the second messenger molecules diacylglycerol (DAG) and inositol 1,4,5-trisphosphate (IP3) is mediated by activated phosphatidylinositol-specific phospholipase C enzymes.		

— VALIDATION IMAGES —

4% Paraformaldehyde-fixed HeLa (treated with anisomycin (20μg/ml for 15min)) (H) cell; Triton X-100 at r.t. for 20 min; Antibody incubation with (Phospho-PLCB3 (Ser537)) monoclonal Antibody, unconjugated (bsm-62936R) 1:100, 90 min at 37°C; followed by conjugated Goat Anti-Rabbit IgG antibody (green, bs-60295G-BF488) at 37°C for 90 min, DAPI (blue, C02-04002) was used to stain the cell nuclei. PBS instead of the primary antibody was used as the blank control.



The HeLa (treated with anisomycin (20μg/ml for 15min)) (H) cells were fixed with 4% PFA (10 min at r.t.) and then permeabilized with 90% ice-cold methanol for 20 min at -20°C, the cells then were incubated in 5%BSA to block non-specific protein-protein interactions (30 min at r.t.), followed by secondary antibody incubation for 40 min at room temperature. Primary Antibody (green):Rabbit Anti-Phospho-PLCB3 (Ser537) antibody (bsm-62936R,1:100); Isotype Control (orange): Rabbit IgG (bs-0295P). Blank control (black): PBS. Acquisition of 20,000 events was performed.