

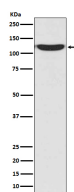
**bsm-62934R****[ Primary Antibody ]****BioSS**  
ANTIBODIES

www.bioss.com.cn

sales@bioss.com.cn

techsupport@bioss.com.cn

400-901-9800

**PKN2 Recombinant Rabbit mAb****DATASHEET****Host:** Rabbit**Isotype:** IgG**Clonality:** Recombinant**GeneID:** 5586**SWISS:** Q16513**Target:** PKN2**Immunogen:** A synthesized peptide derived from human PKN2: 1-58/984.**Purification:** affinity purified by Protein A**Storage:** 10mM phosphate buffered saline(pH 7.4) with 150mM sodium chloride, 0.05% BSA, 0.02% Proclin300 and 50% glycerol. Store at 4°C for short term. Store at -20°C for long term. Avoid repeated freeze/thaw cycles.**Background:** PKC-related serine/threonine-protein kinase and Rho/Rac effector protein that participates in specific signal transduction responses in the cell. Plays a role in the regulation of cell cycle progression, actin cytoskeleton assembly, cell migration, cell adhesion, tumor cell invasion and transcription activation signaling processes.**Applications:** WB (1:1000-2000)**IHC-P** (1:100-200)**IHC-F** (1:100-200)**IF** (1:50-200)**Flow-Cyt** (1:50-100)**ICC/IF** (1:50-200)**IP** (1:20-50)**Reactivity:** Human, Mouse, Rat**Predicted  
MW.:** 112**Subcellular  
Location:** Nucleus**VALIDATION IMAGES**

Western blot analysis of 293T cell lysate. Using PKN2 (bsm-62934R) monoclonal antibody at 1:1000 dilution and 4°C overnight incubation. Followed by conjugated secondary antibody incubation at r.t. for 60 min.