

bsm-62930R**[Primary Antibody]****Bioss**
ANTIBODIES

www.bioss.com.cn

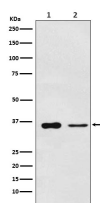
sales@bioss.com.cn

techsupport@bioss.com.cn

400-901-9800

PDLIM1 Recombinant Rabbit mAb**— DATASHEET —**

Host: Rabbit	Isotype: IgG	Applications: WB (1:1000-2000) Flow-Cyt (1:50-100) ICC/IF (1:50-200) IP (1:20-50) Reactivity: Human, Mouse, Rat Predicted MW.: 36 Subcellular Location: Cytoplasm
Clonality: Recombinant		
GeneID: 9124	SWISS: O00151	
Target: PDLIM1		
Immunogen: A synthesized peptide derived from human PDLIM1: 58-121/329.		
Purification: affinity purified by Protein A		
Storage: 10mM phosphate buffered saline(pH 7.4) with 150mM sodium chloride, 0.05% BSA, 0.02% Proclin300 and 50% glycerol. Store at 4°C for short term. Store at -20°C for long term. Avoid repeated freeze/thaw cycles.		
Background: Cytoskeletal protein that may act as an adapter that brings other proteins (like kinases) to the cytoskeleton.		

— VALIDATION IMAGES —

Western blot analysis of (1) Saos2 cell lysate; (2) Mouse lung lysate. Using PDLIM1 (bsm-62930R) monoclonal antibody at 1:1000 dilution and 4°C overnight incubation. Followed by conjugated secondary antibody incubation at r.t. for 60 min.