

bsm-62927R

[Primary Antibody]

Phospho-PAK1/2/3 (Ser144/Ser141/Ser154) Recombinant Rabbit mAb

Bioss
ANTIBODIES

www.bioss.com.cn

sales@bioss.com.cn

techsupport@bioss.com.cn

400-901-9800

DATASHEET

Host: Rabbit

Isotype: IgG

Clonality: Recombinant

CloneNo.: 9G6

GeneID: 5058

SWISS: Q13153

Target: Phospho-PAK1/2/3 (Ser144/Ser141/Ser154)

Immunogen: A synthesized peptide derived from human PAK1 around the phosphorylation site of S144: YM-pS-FT.

Purification: affinity purified by Protein A

Storage: 10mM phosphate buffered saline(pH 7.4) with 150mM sodium chloride, 0.05% BSA, 0.02% Proclin300 and 50% glycerol. Store at 4°C for short term. Store at -20°C for long term. Avoid repeated freeze/thaw cycles.

Background: Serine/threonine protein kinase that plays a role in a variety of different signaling pathways including cytoskeleton regulation, cell migration, or cell cycle regulation.

Applications: WB (1:500-1:5000)

IHC-P (1:100-1:200)

IHC-F (1:100-1:200)

IF (1:100-1:200)

Flow-Cyt (1:20-1:100)

ICC/IF (1:50-1:200)

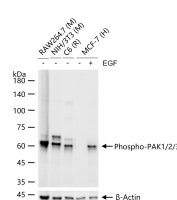
IP (1:20-1:50)

Reactivity: Human, Mouse, Rat

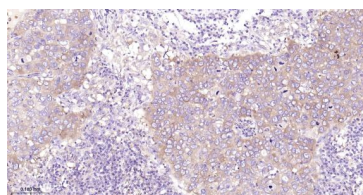
**Predicted
MW.:** 58-62

**Subcellular
Location:** Cell membrane ,Cytoplasm

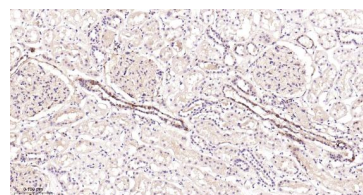
VALIDATION IMAGES



MCF-7 (H) cells were treated with or without EGF (1μg/ml) for 10 min, 25 μg total protein per lane of cell lysates (see on figure) probed with Phospho-PAK1/2/3 (Ser144/Ser141/Ser154) monoclonal antibody, unconjugated (bsm-62927R) at 1:1000 dilution and 4°C overnight incubation. Followed by conjugated secondary antibody incubation at r.t. for 60 min.



Paraformaldehyde-fixed, paraffin embedded Human Breast Cancer; Antigen retrieval by boiling in sodium citrate buffer (pH6.0) for 15 min; Antibody incubation with Phospho-PAK1/2/3 (Ser144/Ser141/Ser154) Monoclonal Antibody, Unconjugated(bsm-62927R) at 1:200 overnight at 4°C, followed by conjugation to the bs-0295G-HRP and DAB (C-0010) staining.



Paraformaldehyde-fixed, paraffin embedded Human Kidney; Antigen retrieval by boiling in sodium citrate buffer (pH6.0) for 15 min; Antibody incubation with Phospho-PAK1/2/3 (Ser144/Ser141/Ser154) Monoclonal Antibody, Unconjugated(bsm-62927R) at 1:200 overnight at 4°C, followed by conjugation to the bs-0295G-HRP and DAB (C-0010) staining.