

bsm-62926R**[Primary Antibody]**

www.bioss.com.cn

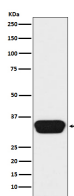
sales@bioss.com.cn

techsupport@bioss.com.cn

400-901-9800

OTX1/2 Recombinant Rabbit mAb**— DATASHEET —**

Host: Rabbit	Isotype: IgG	Applications: WB (1:1000-2000) IHC-P (1:100-200) IHC-F (1:100-200) IF (1:100-200) IP (1:20-50) ChIP (1:20-50) Reactivity: Human, Mouse, Rat Predicted MW.: 37 Subcellular Location: Nucleus
Clonality: Recombinant		
GeneID: 5013	SWISS: P32242	
Target: OTX1/2		
Immunogen: A synthesized peptide derived from human OTX1: 20-70.		
Purification: affinity purified by Protein A		
Storage: 10mM phosphate buffered saline(pH 7.4) with 150mM sodium chloride, 0.05% BSA, 0.02% Proclin300 and 50% glycerol. Store at 4°C for short term. Store at -20°C for long term. Avoid repeated freeze/thaw cycles.		
Background: Probably plays a role in the development of the brain and the sense organs. Can bind to the BCD target sequence (BTS): 5'-TCTAATCCC-3'.		

— VALIDATION IMAGES —

Western blot analysis of Y79 cell lysate. Using OTX1 (bsm-62926R) monoclonal antibody at 1:1000 dilution and 4°C overnight incubation. Followed by conjugated secondary antibody incubation at r.t. for 60 min.