

bsm-62924R**[Primary Antibody]**

www.bioss.com.cn

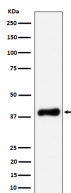
sales@bioss.com.cn

techsupport@bioss.com.cn

400-901-9800

NSDHL Recombinant Rabbit mAb**— DATASHEET —**

Host: Rabbit	Isotype: IgG	Applications: WB (1:1000-2000) IP (1:20-50)
Clonality: Recombinant		Reactivity: Human, Mouse, Rat
GeneID: 50814	SWISS: Q15738	
Target: NSDHL		
Immunogen: A synthesized peptide derived from human NSDHL: 100-150.		
Purification: affinity purified by Protein A		
Storage: 10mM phosphate buffered saline(pH 7.4) with 150mM sodium chloride, 0.05% BSA, 0.02% Proclin300 and 50% glycerol. Store at 4°C for short term. Store at -20°C for long term. Avoid repeated freeze/thaw cycles.		
Background: Catalyzes the NAD(P)+-dependent oxidative decarboxylation of the C4 methyl groups of 4- α -carboxysterols in post-squalene cholesterol biosynthesis (By similarity).Also plays a role in the regulation of the endocytic trafficking of EGFR (By similarity).		
		Predicted MW.: 42
		Subcellular Location: Cell membrane

— VALIDATION IMAGES —

Western blot analysis of HeLa cell lysate. Using NSDHL (bsm-62924R) monoclonal antibody at 1:1000 dilution and 4°C overnight incubation. Followed by conjugated secondary antibody incubation at r.t. for 60 min.