

**bsm-62923R****[ Primary Antibody ]**

www.bioss.com.cn

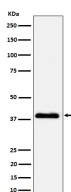
sales@bioss.com.cn

techsupport@bioss.com.cn

400-901-9800

**NSDHL Recombinant Rabbit mAb****— DATASHEET —**

<b>Host:</b> Rabbit	<b>Isotype:</b> IgG	<b>Applications:</b> WB (1:1000-2000) <b>IHC-P</b> (1:100-200) <b>IHC-F</b> (1:100-200) <b>IF</b> (1:50-200) <b>ICC/IF</b> (1:50-200)  <b>Reactivity:</b> Human   <b>Predicted MW.:</b> 42  <b>Subcellular Location:</b> Cell membrane
<b>Clonality:</b> Recombinant		
<b>GeneID:</b> 50814	<b>SWISS:</b> Q15738	
<b>Target:</b> NSDHL		
<b>Immunogen:</b> A synthesized peptide derived from human NSDHL: 175-200.		
<b>Purification:</b> affinity purified by Protein A		
<b>Storage:</b> 10mM phosphate buffered saline(pH 7.4) with 150mM sodium chloride, 0.05% BSA, 0.02% Proclin300 and 50% glycerol. Store at 4°C for short term. Store at -20°C for long term. Avoid repeated freeze/thaw cycles.		
<b>Background:</b> Catalyzes the NAD(P)+-dependent oxidative decarboxylation of the C4 methyl groups of 4-alpha-carboxysterols in post-squalene cholesterol biosynthesis (By similarity).Also plays a role in the regulation of the endocytic trafficking of EGFR (By similarity).		

**— VALIDATION IMAGES —**

Western blot analysis of A431 cell lysate. Using NSDHL (bsm-62923R) monoclonal antibody at 1:1000 dilution and 4°C overnight incubation. Followed by conjugated secondary antibody incubation at r.t. for 60 min.