

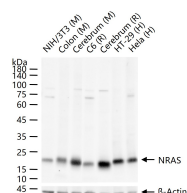
**bsm-62922R****[ Primary Antibody ]****NRAS Recombinant Rabbit mAb****BioSS**  
**ANTIBODIES**

www.bioss.com.cn

sales@bioss.com.cn

techsupport@bioss.com.cn

400-901-9800

**— DATASHEET —****Host:** Rabbit**Isotype:** IgG**Clonality:** Recombinant**CloneNo.:** 3H11**GeneID:** 4893**SWISS:** P01111**Target:** NRAS**Immunogen:** A synthesized peptide derived from human NRAS: 1-50/189.**Purification:** affinity purified by Protein A**Storage:** 10mM phosphate buffered saline(pH 7.4) with 150mM sodium chloride, 0.05% BSA, 0.02% Proclin300 and 50% glycerol.  
Store at 4°C for short term. Store at -20°C for long term. Avoid repeated freeze/thaw cycles.**Background:** Ras proteins bind GDP/GTP and possess intrinsic GTPase activity.**Applications:** **WB** (1:500-1:2000)**Flow-Cyt** (1:20-1:100)**IP** (1:20-1:50)**Reactivity:** Human, Mouse, Rat**Predicted  
MW.:** 21**Subcellular  
Location:** Cell membrane ,Cytoplasm**— VALIDATION IMAGES —**

25 ug total protein per lane of various lysates (see on figure) probed with NRAS monoclonal antibody, unconjugated (bsm-62922R) at 1:1000 dilution and 4°C overnight incubation. Followed by conjugated secondary antibody incubation at r.t. for 60 min.