

**[ Primary Antibody ]**

## Ras Recombinant Rabbit mAb



**BioSS**  
ANTIBODIES

www.bioss.com.cn

sales@bioass.com.cn

techsupport@bioss.com.cn

400-901-9800

## — DATASHEET

**Host:** Rabbit

**Isotype:** IgG

**Clonality:** Recombinant

**CloneNo.:** 8H2

**GeneID:** 4893

**SWISS:** P01111

**Target:** Ras

**Immunogen:** A synthesized peptide derived from human Ras: 25-50.

**Purification:** affinity purified by Protein A

**Storage:** 10mM phosphate buffered saline(pH 7.4) with 150mM sodium chloride, 0.05% BSA, 0.02% Proclin300 and 50% glycerol. Store at 4°C for short term. Store at -20°C for long term. Avoid repeated freeze/thaw cycles.

**Background:** Ras proteins bind GDP/GTP and possess intrinsic GTPase activity.

**Applications: WB (1:500-2000)**

**IHC-P** (1:50-200)

**IHC-F (1:50-200)**

**IF (1:50-200)**

**Flow-Cyt** (1:20-50)

**ICC/IF (1:50-200)**

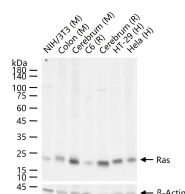
**IP** (1:20-50)

**Reactivity:** Human, Mouse, Rat

**Predicted MW.:** 21,22

**Subcellular Location:** Cell membrane ,Cytoplasm

## — VALIDATION IMAGES



25 ug total protein per lane of various lysates (see on figure) probed with Ras monoclonal antibody, unconjugated (bsm-62921R) at 1:1000 dilution and 4°C overnight incubation. Followed by conjugated secondary antibody incubation at r.t. for 60 min.