

**bsm-62918R****[ Primary Antibody ]**

**Bioss**  
ANTIBODIES

www.bioss.com.cn

sales@bioss.com.cn

techsupport@bioss.com.cn

400-901-9800

## Nucleolin Recombinant Rabbit mAb

### DATASHEET

**Host:** Rabbit**Isotype:** IgG**Clonality:** Recombinant**CloneNo.:** 17C16**GeneID:** 4691**SWISS:** P19338**Target:** Nucleolin**Immunogen:** A synthesized peptide derived from human NCL: 670-710.**Purification:** affinity purified by Protein A

**Storage:** 10mM phosphate buffered saline(pH 7.4) with 150mM sodium chloride, 0.05% BSA, 0.02% Proclin300 and 50% glycerol. Store at 4°C for short term. Store at -20°C for long term. Avoid repeated freeze/thaw cycles.

**Background:** Nucleolin is the major nucleolar protein of growing eukaryotic cells. It is found associated with intranucleolar chromatin and pre-ribosomal particles. It induces chromatin decondensation by binding to histone H1. It is thought to play a role in pre-rRNA transcription and ribosome assembly. May play a role in the process of transcriptional elongation. Binds RNA oligonucleotides with 5'-UUAGGG-3' repeats more tightly than the telomeric single-stranded DNA 5'-TTAGGG-3' repeats.

**Applications:** IHC-P (1:100-500)

IHC-F (1:100-500)

IF (1:100-500)

Flow-Cyt (1:50-100)

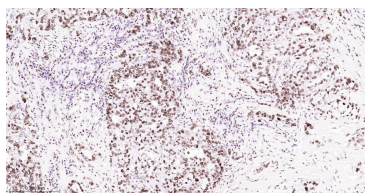
ICC/IF (1:50-200)

**Reactivity:** Human, Mouse, Rat

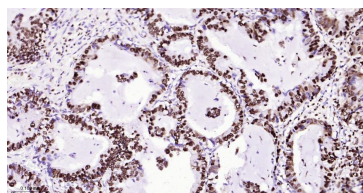
**Predicted**  
**MW.:** 77

**Subcellular**  
**Location:** Cytoplasm ,Nucleus

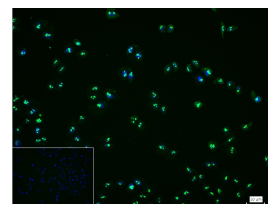
### VALIDATION IMAGES



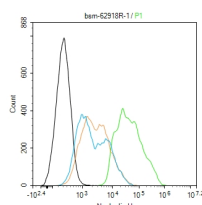
Paraformaldehyde-fixed, paraffin embedded Human Breast Cancer; Antigen retrieval by boiling in sodium citrate buffer (pH6.0) for 15 min; The section was incubated with Nucleolin Monoclonal Antibody, Unconjugated (bsm-62918R) at 1:200 overnight at 4°C, followed by conjugation to the bs-0295G-HRP and DAB (C-0010) staining.



Paraformaldehyde-fixed, paraffin embedded Human Lung Cancer; Antigen retrieval by boiling in sodium citrate buffer (pH6.0) for 15 min; The section was incubated with Nucleolin Monoclonal Antibody, Unconjugated (bsm-62918R) at 1:200 overnight at 4°C, followed by conjugation to the bs-0295G-HRP and DAB (C-0010) staining.



4% Paraformaldehyde-fixed MCF-7 (H) cell; Triton X-100 at r.t. for 20 min; Antibody incubation with (Nucleolin) monoclonal Antibody, unconjugated (bsm-62918R) 1:100, 90 min at 37°C; followed by conjugated Goat Anti-Rabbit IgG antibody (green, bs-40295G-FITC) at 37°C for 90 min, DAPI (blue, C02-04002) was used to stain the cell nuclei. PBS instead of the primary antibody was used as the blank control.



The HeLa (H) cells were fixed with 4% PFA (10 min at r.t.) and then permeabilized with 90% ice-cold methanol for 20 min at -20°C, the cells then were incubated in 5% BSA to block non-specific protein-protein interactions (30 min at r.t.). Primary Antibody (green): Rabbit Anti-Nucleolin antibody (bsm-62918R): 1 µg/10<sup>6</sup> cells; Secondary Antibody (white blue): Goat anti-Rabbit IgG-FITC (bs-40295G-FITC): 1 µg/test. Isotype Control (orange): Rabbit IgG (bs-0295P). Blank control (black): PBS. Acquisition of 20,000

**Important Note:** This product as supplied is intended for research use only, not for use in human, therapeutic or diagnostic applications.

events was performed.