
CREB-1 Rabbit pAb

Catalog Number: bs-0035R

Target Protein: CREB-1

Concentration: 1mg/ml

Form: Liquid

Host: Rabbit

Clonality: Polyclonal

Isotype: IgG

Applications: WB (1:500-2000), IHC-P (1:100-500), IHC-F (1:100-500), IF (1:100-500)

Reactivity: Human, Mouse (predicted:Rat, Pig, Sheep, Cow, Chicken, Dog)

Predicted MW: 37 kDa

Subcellular Nucleus

Locations:

Entrez Gene: 1385

Swiss Prot: P16220

Source: KLH conjugated synthetic peptide derived from human CREB-1: 101-150/341.

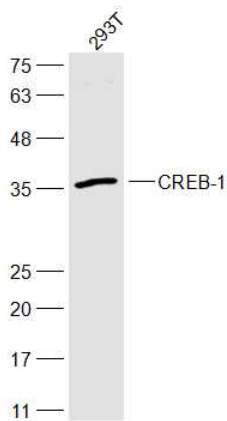
Purification: affinity purified by Protein A

Storage: 0.01M TBS (pH7.4) with 1% BSA, 0.02% Proclin300 and 50% Glycerol.

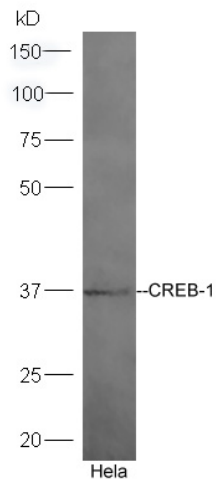
Shipped at 4°C. Store at -20°C for one year. Avoid repeated freeze/thaw cycles.

Background: The ATF/CREB family consists of transcription factors that function through binding to the cAMP responsive element (CRE) palindromic octanucleotide, TGACCTCA. The best characterized members of this gene family include CREB-1, CREB-2, ATF-1, ATF-2, ATF-3 and ATF-4. These transcription factors share highly-related COOH terminal leucine zipper dimerization and basic DNA bindings but are highly divergent in their amino terminal domains. Although each of the ATF/CREB proteins bind CREs in their homodimeric form, in certain instances they also bind as heterodimers, both within the ATF/CREB family and with members of the AP-1 transcription factor family. It has recently been shown that protein kinase A-mediated CREB phosphorylation results in its binding to a 265kDa nuclear protein designated CBP (CREB-binding protein), which may represent a CREB co-activator.

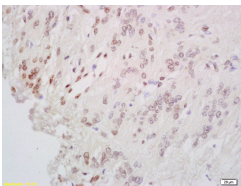
VALIDATION IMAGES



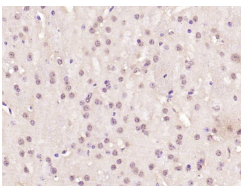
Sample: 293T(Human) Cell Lysate at 30 ug Primary: Anti-CREB-1 (bs-0035R) at 1/300 dilution Secondary: IRDye800CW Goat Anti-Rabbit IgG at 1/20000 dilution Predicted band size: 37 kD Observed band size: 37 kD



Sample: HeLa Cell Lysate at 40 ug Primary: Anti-CREB-1 (bs-0035R) at 1:300 dilution; Secondary: HRP conjugated Goat-Anti-rabbit IgG(bs-0295G-HRP) at 1: 5000 dilution; Predicted band size: 37 kD Observed band size: 37 kD



Tissue/cell: human cervical carcinoma; 4% Paraformaldehyde-fixed and paraffin-embedded; Antigen retrieval: citrate buffer (0.01M, pH 6.0), Boiling bathing for 15min; Block endogenous peroxidase by 3% Hydrogen peroxide for 30min; Blocking buffer (normal goat serum, C-0005) at 37°C for 20 min; Incubation: Anti-CREB-1 Polyclonal Antibody, Unconjugated(bs-0035R) 1:200, overnight at 4°C, followed by conjugation to the secondary antibody(SP-0023) and DAB(C-0010) staining



Paraformaldehyde-fixed, paraffin embedded (mouse brain); Antigen retrieval by boiling in sodium citrate buffer (pH6.0) for 15min; Block endogenous peroxidase by 3% hydrogen peroxide for 20 minutes; Blocking buffer (normal goat serum) at 37°C for 30min; Antibody incubation with (CREB-1) Polyclonal Antibody, Unconjugated (bs-0035R) at 1:200 overnight at 4°C, followed by operating according to SP Kit(Rabbit) (sp-0023) instructions and DAB staining.

PRODUCT SPECIFIC PUBLICATIONS

[IF=8.886] Bolin Cai. et al. LncEDCH1 improves mitochondrial function to reduce muscle atrophy by interacting with sarcoplasmic/endoplasmic reticulum calcium ATPase 2. Mol Ther-Nucl Acids. 2021 Dec;; WB ; Chicken . 35024244

[IF=8.4] Hu Bowen. et al. Local GHR roles in regulation of mitochondrial function through mitochondrial biogenesis during myoblast differentiation. CELL COMMUN SIGNAL. 2023 Dec;21(1):1-18 WB ; Chicken . 37337300

[IF=5.714] Xiaoxiang Peng. et al. Phasic regulation of the ATP/P2X7 receptor signaling pathway affects the function of antigen-presenting cells in experimental autoimmune uveitis. INT IMMUNOPHARMACOL. 2023 Jun;119:110241 WB ; Mouse . 37141671

[IF=3.68] Zhang et al. Neuroprotective effect of arctigenin via upregulation of P-CREB in mouse primary neurons and human SH-SY5Y

neuroblastoma cells. (2013) Int.J.Mol.Sci. 14:18657-69 IF ; Human . 24025424