

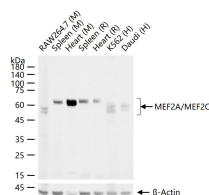
bsm-62907R**[Primary Antibody]****MEF2A/MEF2C Recombinant Rabbit mAb****Bioss**
ANTIBODIES

www.bioss.com.cn

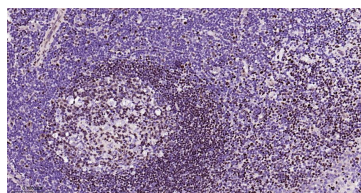
sales@bioss.com.cn

techsupport@bioss.com.cn

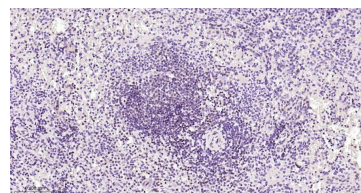
400-901-9800

DATASHEET**Host:** Rabbit**Isotype:** IgG**Clonality:** Recombinant**CloneNo.:** 5H4**GeneID:** 4208**SWISS:** Q06413**Target:** MEF2A/MEF2C**Immunogen:** A synthesized peptide derived from human MEF2A: 250-473.**Purification:** affinity purified by Protein A**Storage:** 10mM phosphate buffered saline(pH 7.4) with 150mM sodium chloride, 0.05% BSA, 0.02% Proclin300 and 50% glycerol. Store at 4°C for short term. Store at -20°C for long term. Avoid repeated freeze/thaw cycles.**Background:** Transcription activator which binds specifically to the MEF2 element present in the regulatory regions of many muscle-specific genes. Controls cardiac morphogenesis and myogenesis, and is also involved in vascular development. Plays an essential role in hippocampal-dependent learning and memory by suppressing the number of excitatory synapses and thus regulating basal and evoked synaptic transmission. Crucial for normal neuronal development, distribution, and electrical activity in the neocortex.**Applications:** WB (1:500-1:2000)**IHC-P** (1:50-1:200)**IHC-F** (1:50-1:200)**IF** (1:50-1:200)**Flow-Cyt** (1:20-1:100)**ICC/IF** (1:50-1:200)**Reactivity:** Human, Mouse, Rat**Predicted
MW.:** 51,55**Subcellular
Location:** Nucleus**VALIDATION IMAGES**

25 ug total protein per lane of various lysates (see on figure) probed with MEF2A/MEF2C monoclonal antibody, unconjugated (bsm-62907R) at 1:1000 dilution and 4°C overnight incubation. Followed by conjugated secondary antibody incubation at r.t. for 60 min.



Paraformaldehyde-fixed, paraffin embedded Human Tonsil; Antigen retrieval by boiling in sodium citrate buffer (pH6.0) for 15 min; Antibody incubation with MEF2A/MEF2C Monoclonal Antibody, Unconjugated(bsm-62907R) at 1:200 overnight at 4°C, followed by conjugation to the bs-0295G-HRP and DAB (C-0010) staining.



Paraformaldehyde-fixed, paraffin embedded Human Spleen; Antigen retrieval by boiling in sodium citrate buffer (pH6.0) for 15 min; Antibody incubation with MEF2A/MEF2C Monoclonal Antibody, Unconjugated(bsm-62907R) at 1:200 overnight at 4°C, followed by conjugation to the bs-0295G-HRP and DAB (C-0010) staining.