

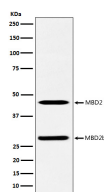
**bsm-62904R****[ Primary Antibody ]****Bioss**  
ANTIBODIES

www.bioss.com.cn

sales@bioss.com.cn

techsupport@bioss.com.cn

400-901-9800

**MBD2 Recombinant Rabbit mAb****— DATASHEET —****Host:** Rabbit**Isotype:** IgG**Clonality:** Recombinant**GeneID:** 8932**SWISS:** Q9UBB5**Target:** MBD2**Immunogen:** A synthesized peptide derived from human MBD2: 100-165/411.**Purification:** affinity purified by Protein A**Storage:** 10mM phosphate buffered saline(pH 7.4) with 150mM sodium chloride, 0.05% BSA, 0.02% Proclin300 and 50% glycerol. Store at 4°C for short term. Store at -20°C for long term. Avoid repeated freeze/thaw cycles.**Background:** DNA methylation is the major modification of eukaryotic genomes and plays an essential role in mammalian development. Human proteins MECP2, MBD1, MBD2, MBD3, and MBD4 comprise a family of nuclear proteins related by the presence in each of a methyl-CpG binding domain.**Applications:** **WB** (1:1000-1:5000)  
**IHC-P** (1:100-1:200)  
**IHC-F** (1:100-1:200)  
**IF** (1:50-1:200)  
**Flow-Cyt** (1:20-1:100)  
**ICC/IF** (1:50-1:200)  
**IP** (1:20-1:50)**Reactivity:** Human, Mouse, Rat**Predicted**  
**MW.:** 43**Subcellular**  
**Location:** Nucleus**— VALIDATION IMAGES —**

Western blot analysis of A375 cell lysate. Using MBD2 (bsm-62904R) monoclonal antibody at 1:1000 dilution and 4°C overnight incubation. Followed by conjugated secondary antibody incubation at r.t. for 60 min.