

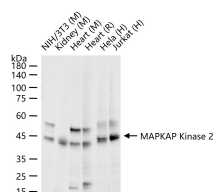
bsm-62903R**[Primary Antibody]****MAPKAP Kinase 2 Recombinant Rabbit mAb****Bioss**
ANTIBODIES

www.bioss.com.cn

sales@bioss.com.cn

techsupport@bioss.com.cn

400-901-9800

— DATASHEET —**Host:** Rabbit**Isotype:** IgG**Clonality:** Recombinant**CloneNo.:** 15C5**GeneID:** 9261**SWISS:** P49137**Target:** MAPKAP Kinase 2**Immunogen:** A synthesized peptide derived from human MK2: 350-400/400.**Purification:** affinity purified by Protein A**Storage:** 10mM phosphate buffered saline(pH 7.4) with 150mM sodium chloride, 0.05% BSA, 0.02% Proclin300 and 50% glycerol. Store at 4°C for short term. Store at -20°C for long term. Avoid repeated freeze/thaw cycles.**Background:** Stress-activated serine/threonine-protein kinase involved in cytokine production, endocytosis, reorganization of the cytoskeleton, cell migration, cell cycle control, chromatin remodeling, DNA damage response and transcriptional regulation. Following stress, it is phosphorylated and activated by MAP kinase p38-alpha/MAPK14, leading to phosphorylation of substrates. Phosphorylates serine in the peptide sequence, Hyd-X-R-X2-S, where Hyd is a large hydrophobic residue.**Applications:** **WB** (1:500-1:2000)
IP (1:20-1:50)**Reactivity:** Human, Mouse, Rat**Predicted
MW.:** 46**Subcellular
Location:** Cytoplasm ,Nucleus**— VALIDATION IMAGES —**

25 ug total protein per lane of various lysates
(see on figure) probed with MAPKAP Kinase 2
monoclonal antibody, unconjugated
(bsm-62903R) at 1:1000 dilution and 4°C
overnight incubation. Followed by conjugated
secondary antibody incubation at r.t. for 60 min.