

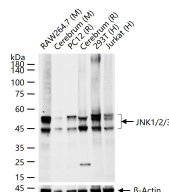
bsm-62901R**[Primary Antibody]****BioSS**
ANTIBODIES

www.bioss.com.cn

sales@bioss.com.cn

techsupport@bioss.com.cn

400-901-9800

JNK1/2/3 Recombinant Rabbit mAb**DATASHEET****Host:** Rabbit**Isotype:** IgG**Clonality:** Recombinant**CloneNo.:** 18G11**GeneID:** 5599**SWISS:** P45983**Target:** JNK1/2/3**Immunogen:** A synthesized peptide derived from human JNK1: 1-400/427.**Purification:** affinity purified by Protein A**Storage:** 10mM phosphate buffered saline(pH 7.4) with 150mM sodium chloride, 0.05% BSA, 0.02% Proclin300 and 50% glycerol. Store at 4°C for short term. Store at -20°C for long term. Avoid repeated freeze/thaw cycles.**Background:** Serine/threonine-protein kinase involved in various processes such as cell proliferation, differentiation, migration, transformation and programmed cell death. Extracellular stimuli such as proinflammatory cytokines or physical stress stimulate the stress-activated protein kinase/c-Jun N-terminal kinase (SAP/JNK) signaling pathway.**Applications:** WB (1:500-2000)**ICC/IF** (1:20-100)**IP** (1:20-50)**Reactivity:** Human, Mouse, Rat
(predicted: Cow, Zebrafish, Dog, Monkey)**Predicted
MW.:** 48,53**Subcellular
Location:** Nucleus**VALIDATION IMAGES**

25 ug total protein per lane of various lysates
(see on figure) probed with JNK1/2/3
monoclonal antibody, unconjugated
(bsm-62901R) at 1:2000 dilution and 4°C
overnight incubation. Followed by conjugated
secondary antibody incubation at r.t. for 60 min.

SELECTED CITATIONS

- **[IF=7.7]** Xianqun Meng. et al. Anti-inflammatory effect of polysaccharides from Sambucus williamsii Hance roots in lipopolysaccharide-stimulated RAW264.7 macrophages and acute lung injury in mice. INTERNATIONAL JOURNAL OF BIOLOGICAL MACROMOLECULES. 2025 Feb 21; 306(Pt 1): 141368. Western Blot ; Mouse.
10.1016/j.ijbiomac.2025.141368