

bsm-62900R

[Primary Antibody]

Phospho-MEK1 (Thr292) Recombinant Rabbit mAb

Bioss
ANTIBODIES

www.bioss.com.cn

sales@bioss.com.cn

techsupport@bioss.com.cn

400-901-9800

DATASHEET

Host: Rabbit

Isotype: IgG

Clonality: Recombinant

CloneNo.: 11E2

GeneID: 5604

SWISS: Q02750

Target: Phospho-MEK1 (Thr292)

Immunogen: A synthesized peptide derived from human MEK1 around the phosphorylation site of T292: PR-pT-PG.

Purification: affinity purified by Protein A

Storage: 10mM phosphate buffered saline(pH 7.4) with 150mM sodium chloride, 0.05% BSA, 0.02% Proclin300 and 50% glycerol. Store at 4°C for short term. Store at -20°C for long term. Avoid repeated freeze/thaw cycles.

Background: Microtubule plus-end-directed kinetochore motor which plays an important role in chromosome congression, microtubule-kinetochore conjugation and spindle assembly checkpoint activation. Drives chromosome congression (alignment of chromosomes at the spindle equator resulting in the formation of the metaphase plate) by mediating the lateral sliding of polar chromosomes along spindle microtubules towards the spindle equator and by aiding the establishment and maintenance of connections between kinetochores and spindle microtubules.

Applications: WB (1:500-2000)

IHC-P (1:50-200)

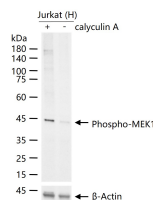
IHC-F (1:50-200)

IF (1:50-200)

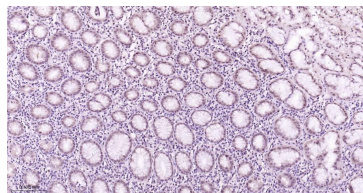
Reactivity: Human

Predicted MW.: 43

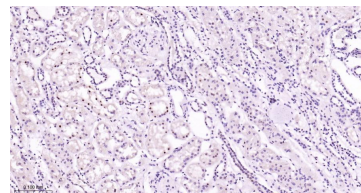
VALIDATION IMAGES



Jurkat (H) cells were treated with or without calyculin A (100 nM) for 30 min, 25 µg total protein per lane of cell lysates (see on figure) probed with Phospho-MEK1 (Thr292) monoclonal antibody, unconjugated (bsm-62900R) at 1:1000 dilution and 4°C overnight incubation. Followed by conjugated secondary antibody incubation at r.t. for 60 min.



Paraformaldehyde-fixed, paraffin embedded Human stomach; Antigen retrieval by boiling in sodium citrate buffer (pH6.0) for 15 min; The section was incubated with Phospho-MEK1 (Thr292) Monoclonal Antibody, Unconjugated(bsm-62900R) at 1:200 overnight at 4°C, followed by conjugation to the bs-0295G-HRP and DAB (C-0010) staining.



Paraformaldehyde-fixed, paraffin embedded Human kidney; Antigen retrieval by boiling in sodium citrate buffer (pH6.0) for 15 min; The section was incubated with Phospho-MEK1 (Thr292) Monoclonal Antibody, Unconjugated(bsm-62900R) at 1:200 overnight at 4°C, followed by conjugation to the bs-0295G-HRP and DAB (C-0010) staining.