

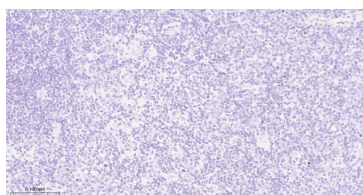
bsm-62896R**[Primary Antibody]****c-Maf Recombinant Rabbit mAb****BioSS**
ANTIBODIES

www.bioss.com.cn

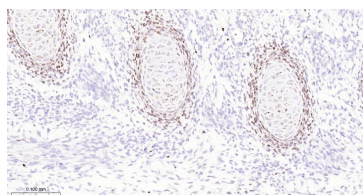
sales@bioss.com.cn

techsupport@bioss.com.cn

400-901-9800

— DATASHEET —**Host:** Rabbit**Isotype:** IgG**Clonality:** Recombinant**CloneNo.:** 2E3**GeneID:** 4094**SWISS:** O75444**Target:** c-Maf**Immunogen:** A synthesized peptide derived from human c Maf: 1-180.**Purification:** affinity purified by Protein A**Storage:** 10mM phosphate buffered saline(pH 7.4) with 150mM sodium chloride, 0.05% BSA, 0.02% Proclin300 and 50% glycerol. Store at 4°C for short term. Store at -20°C for long term. Avoid repeated freeze/thaw cycles.**Background:** Acts as a transcriptional activator or repressor. Involved in embryonic lens fiber cell development. Recruits the transcriptional coactivators CREBBP and/or EP300 to crystallin promoters leading to up-regulation of crystallin gene during lens fiber cell differentiation.**Applications:** IHC-P (1:50-1:200)**IHC-F** (1:50-1:200)**IF** (1:50-1:200)**Reactivity:** Human, Mouse, Rat**Predicted
MW.:** 38**Subcellular
Location:** Nucleus**— VALIDATION IMAGES —**

Paraformaldehyde-fixed, paraffin embedded Human Tonsil; Antigen retrieval by boiling in sodium citrate buffer (pH6.0) for 15 min; Antibody incubation with c-Maf Monoclonal Antibody, Unconjugated(bsm-62896R) at 1:200 overnight at 4°C, followed by conjugation to the bs-0295G-HRP and DAB (C-0010) staining.



Paraformaldehyde-fixed, paraffin embedded Rat Embryo; Antigen retrieval by boiling in sodium citrate buffer (pH6.0) for 15 min; Antibody incubation with c-Maf Monoclonal Antibody, Unconjugated(bsm-62896R) at 1:200 overnight at 4°C, followed by conjugation to the bs-0295G-HRP and DAB (C-0010) staining.