

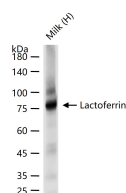
bsm-62893R**[Primary Antibody]****Lactoferrin Recombinant Rabbit mAb****BioSS**
ANTIBODIES

www.bioss.com.cn

sales@bioss.com.cn

techsupport@bioss.com.cn

400-901-9800

— DATASHEET —**Host:** Rabbit**Isotype:** IgG**Clonality:** Recombinant**CloneNo.:** 8E16**GeneID:** 4057**SWISS:** P02788**Target:** Lactoferrin**Immunogen:** A synthesized peptide derived from human Lactoferrin: 100-150/710.**Purification:** affinity purified by Protein A**Storage:** 10mM phosphate buffered saline(pH 7.4) with 150mM sodium chloride, 0.05% BSA, 0.02% Proclin300 and 50% glycerol.
Store at 4°C for short term. Store at -20°C for long term. Avoid repeated freeze/thaw cycles.**Background:** Transferrins are iron binding transport proteins which can bind two Fe³⁺ ions in association with the binding of an anion, usually bicarbonate.**Applications:** WB (1:1000-1:2000)**ICC/IF** (1:50-1:200)**IP** (1:20-1:50)**Reactivity:** Human**Predicted**
MW.: 78**Subcellular** Secreted ,Cytoplasm
Location: ,Nucleus**— VALIDATION IMAGES —**

25 ug total protein per lane of various lysates
(see on figure) probed with Lactoferrin
monoclonal antibody, unconjugated
(bsm-62893R) at 1:1000 dilution and 4°C
overnight incubation. Followed by conjugated
secondary antibody incubation at r.t. for 60 min.