

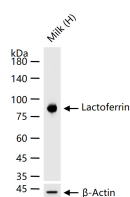
bsm-62892R**[Primary Antibody]****Lactoferrin Recombinant Rabbit mAb****Bioss**
ANTIBODIES

www.bioss.com.cn

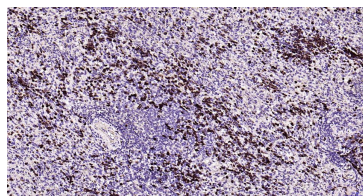
sales@bioss.com.cn

techsupport@bioss.com.cn

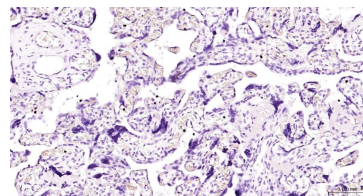
400-901-9800

— DATASHEET —**Host:** Rabbit**Isotype:** IgG**Clonality:** Recombinant**CloneNo.:** 19C8**GeneID:** 4057**SWISS:** P02788**Target:** Lactoferrin**Immunogen:** A synthesized peptide derived from human Lactoferrin: 650-710/710.**Purification:** affinity purified by Protein A**Storage:** 10mM phosphate buffered saline(pH 7.4) with 150mM sodium chloride, 0.05% BSA, 0.02% Proclin300 and 50% glycerol. Store at 4°C for short term. Store at -20°C for long term. Avoid repeated freeze/thaw cycles.**Background:** Transferrins are iron binding transport proteins which can bind two Fe³⁺ ions in association with the binding of an anion, usually bicarbonate.**Applications:** **WB** (1:1000-5000)**IHC-P** (1:100-500)**IHC-F** (1:100-500)**IF** (1:100-500)**IP** (1:20-100)**Reactivity:** Human**Predicted**
MW.: 78**Subcellular** Secreted ,Cytoplasm
Location: ,Nucleus**— VALIDATION IMAGES —**

25 ug total protein per lane of various lysates (see on figure) probed with Lactoferrin monoclonal antibody, unconjugated (bsm-62892R) at 1:1000 dilution and 4°C overnight incubation. Followed by conjugated secondary antibody incubation at r.t. for 60 min.



Paraformaldehyde-fixed, paraffin embedded Human spleen; Antigen retrieval by boiling in sodium citrate buffer (pH6.0) for 15 min; Antibody incubation with Lactoferrin Monoclonal Antibody, Unconjugated (bsm-62892R) at 1:200 overnight at 4°C, followed by conjugation to the bs-0295G-HRP and DAB (C-0010) staining.



Paraformaldehyde-fixed, paraffin embedded Human placenta; Antigen retrieval by boiling in sodium citrate buffer (pH6.0) for 15 min; Antibody incubation with Lactoferrin Monoclonal Antibody, Unconjugated (bsm-62892R) at 1:200 overnight at 4°C, followed by conjugation to the bs-0295G-HRP and DAB (C-0010) staining.