

bsm-62891R**[Primary Antibody]****BioSS**
ANTIBODIES

www.bioss.com.cn

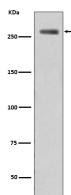
sales@bioss.com.cn

techsupport@bioss.com.cn

400-901-9800

Phospho-LRRK2 (Ser935) Recombinant Rabbit mAb**— DATASHEET —**

Host: Rabbit	Isotype: IgG	Applications: WB (1:1000-1:2000) ICC/IF (1:50-1:200)
Clonality: Recombinant		Reactivity: Human, Mouse
GeneID: 120892	SWISS: Q5S007	
Target: Phospho-LRRK2 (Ser935)		
Immunogen: A synthesized peptide derived from human LRRK2 around the phosphorylation site of S935: SN-pS-LG.		Predicted MW.: 286
Purification: affinity purified by Protein A		Subcellular Location: Cell membrane ,Cytoplasm
Storage: 10mM phosphate buffered saline(pH 7.4) with 150mM sodium chloride, 0.05% BSA, 0.02% Proclin300 and 50% glycerol. Store at 4°C for short term. Store at -20°C for long term. Avoid repeated freeze/thaw cycles.		
Background: Serine/threonine-protein kinase which phosphorylates a broad range of proteins involved in multiple processes such as neuronal plasticity, innate immunity, autophagy, and vesicle trafficking.		

— VALIDATION IMAGES —

Western blot analysis of WT-LRRK2 cell lysate treated LRRK2. Using Phospho-LRRK2 (Ser935) (bsm-62891R) monoclonal antibody at 1:1000 dilution and 4°C overnight incubation. Followed by conjugated secondary antibody incubation at r.t. for 60 min.