

bsm-62884R**[Primary Antibody]**

www.bioss.com.cn

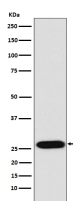
sales@bioss.com.cn

techsupport@bioss.com.cn

400-901-9800

Lin28 Recombinant Rabbit mAb**— DATASHEET —**

Host: Rabbit	Isotype: IgG	Applications: WB (1:1000-1:2000) IHC-P (1:100-1:200) IHC-F (1:100-1:200) IF (1:50-1:200) Flow-Cyt (1:20-1:100) ICC/IF (1:50-1:200) IP (1:20-1:50) Reactivity: Human Predicted MW.: ²³ Subcellular Location: Cytoplasm ,Nucleus
Clonality: Recombinant		
GeneID: 79727	SWISS: Q9H9Z2	
Target: Lin28		
Immunogen: A synthesized peptide derived from human Lin 28A: 180-209.		
Purification: affinity purified by Protein A		
Storage: 10mM phosphate buffered saline(pH 7.4) with 150mM sodium chloride, 0.05% BSA, 0.02% Proclin300 and 50% glycerol. Store at 4°C for short term. Store at -20°C for long term. Avoid repeated freeze/thaw cycles.		
Background: Seems to recognize a common structural G-quartet (G4) feature in its miRNA and mRNA targets (Probable). 'Translational enhancer' that drives specific mRNAs to polysomes and increases the efficiency of protein synthesis. Its association with the translational machinery and target mRNAs results in an increased number of initiation events per molecule of mRNA and, indirectly, in mRNA stabilization.		

— VALIDATION IMAGES —

Western blot analysis of NCCIT cell lysate. Using Lin28 (bsm-62884R) monoclonal antibody at 1:1000 dilution and 4°C overnight incubation. Followed by conjugated secondary antibody incubation at r.t. for 60 min.