

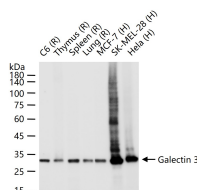
bsm-62883R**[Primary Antibody]****Bioss**
ANTIBODIES

www.bioss.com.cn

sales@bioss.com.cn

techsupport@bioss.com.cn

400-901-9800

Galectin 3 Recombinant Rabbit mAb**— DATASHEET —****Host:** Rabbit**Isotype:** IgG**Clonality:** Recombinant**CloneNo.:** 15E7**GeneID:** 3958**SWISS:** P17931**Target:** Galectin 3**Immunogen:** A synthesized peptide derived from human Galectin 3: 4-36/250.**Purification:** affinity purified by Protein A**Storage:** 10mM phosphate buffered saline(pH 7.4) with 150mM sodium chloride, 0.05% BSA, 0.02% Proclin300 and 50% glycerol.
Store at 4°C for short term. Store at -20°C for long term. Avoid repeated freeze/thaw cycles.**Background:** Galactose-specific lectin which binds IgE. May mediate with the alpha-3, beta-1 integrin the stimulation by CSPG4 of endothelial cells migration. Together with DMBT1, required for terminal differentiation of columnar epithelial cells during early embryogenesis.**Applications:** WB (1:500-2000)**Flow-Cyt** (1:20-50)**ICC/IF** (1:50-200)**Reactivity:** Human, Rat**Predicted**
MW.: 26**Subcellular** Secreted ,Cell membrane
Location: ,Cytoplasm ,Nucleus**— VALIDATION IMAGES —**

25 ug total protein per lane of various lysates
(see on figure) probed with Galectin 3
monoclonal antibody, unconjugated
(bsm-62883R) at 1:2000 dilution and 4°C
overnight incubation. Followed by conjugated
secondary antibody incubation at r.t. for 60 min.