

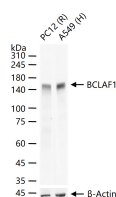
**bsm-62880R****[ Primary Antibody ]****BCLAF1 Recombinant Rabbit mAb****Bioss**  
ANTIBODIES

www.bioss.com.cn

sales@bioss.com.cn

techsupport@bioss.com.cn

400-901-9800

**— DATASHEET —****Host:** Rabbit**Isotype:** IgG**Clonality:** Recombinant**CloneNo.:** 10C6**GeneID:** 9774**SWISS:** Q9NYF8**Target:** BCLAF1**Immunogen:** A synthesized peptide derived from human BTF: 60-120/920.**Purification:** affinity purified by Protein A**Storage:** 10mM phosphate buffered saline(pH 7.4) with 150mM sodium chloride, 0.05% BSA, 0.02% Proclin300 and 50% glycerol. Store at 4°C for short term. Store at -20°C for long term. Avoid repeated freeze/thaw cycles.**Background:** Death-promoting transcriptional repressor. May be involved in cyclin-D1/CCND1 mRNA stability through the SNARP complex which associates with both the 3'end of the CCND1 gene and its mRNA.**Applications:** **WB** (1:500-1:2000)  
**IHC-P** (1:100-1:200)  
**IHC-F** (1:100-1:200)  
**IF** (1:50-1:200)  
**ICC/IF** (1:50-1:200)**Reactivity:** Human, Rat  
(predicted: Mouse)**Predicted  
MW.:** 106**Subcellular  
Location:** Cytoplasm ,Nucleus**— VALIDATION IMAGES —**

25 ug total protein per lane of various lysates (see on figure) probed with BCLAF1 monoclonal antibody, unconjugated (bsm-62880R) at 1:1000 dilution and 4°C overnight incubation. Followed by conjugated secondary antibody incubation at r.t. for 60 min.