

bsm-62877R

[**Primary Antibody**]

Bioss
ANTIBODIES

www.bioss.com.cn

sales@bioss.com.cn

techsupport@bioss.com.cn

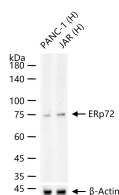
400-901-9800

ERp72 Recombinant Rabbit mAb

— DATASHEET —

Host: Rabbit	Isotype: IgG	Applications: WB (1:500-2000) IHC-P (1:100-200) IHC-F (1:100-200) IF (1:100-200) Reactivity: Human Predicted MW.: 73 Subcellular Location: Cytoplasm
Clonality: Recombinant		
GeneID: 9601	SWISS: P13667	
Target: ERp72		
Immunogen: A synthesized peptide derived from human ERp72: 550-611/645.		
Purification: affinity purified by Protein A		
Storage: 10mM phosphate buffered saline(pH 7.4) with 150mM sodium chloride, 0.05% BSA, 0.02% Proclin300 and 50% glycerol. Store at 4°C for short term. Store at -20°C for long term. Avoid repeated freeze/thaw cycles.		
Background: This gene encodes a member of the disulfide isomerase (PDI) family of endoplasmic reticulum (ER) proteins that catalyze protein folding and thiol-disulfide interchange reactions. The encoded protein has an N-terminal ER-signal sequence, three catalytically active thioredoxin (TRX) domains, two TRX-like domains and a C-terminal ER-retention sequence. This protein, when bound to cyclophilin B, enhances the rate of immunoglobulin G intermolecular disulfide bonding and antibody assembly.		

— VALIDATION IMAGES —



25 ug total protein per lane of various lysates (see on figure) probed with ERp72 monoclonal antibody, unconjugated (bsm-62877R) at 1:1000 dilution and 4°C overnight incubation. Followed by conjugated secondary antibody incubation at r.t. for 60 min.