

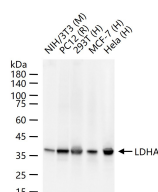
bsm-62875R**[Primary Antibody]****LDHA Recombinant Rabbit mAb****Bioss**
ANTIBODIES

www.bioss.com.cn

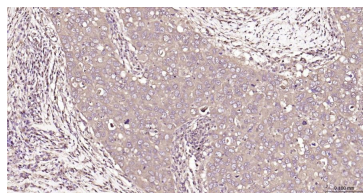
sales@bioss.com.cn

techsupport@bioss.com.cn

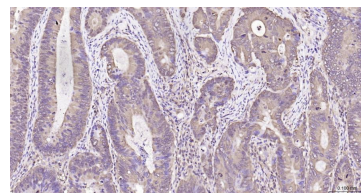
400-901-9800

— DATASHEET —**Host:** Rabbit**Isotype:** IgG**Clonality:** Recombinant**CloneNo.:** 18A13**GeneID:** 3939**SWISS:** P00338**Target:** LDHA**Immunogen:** A synthesized peptide derived from human LDHA: 254-300.**Purification:** affinity purified by Protein A**Storage:** 0.01M TBS (pH7.4) with 1% BSA, 0.02% Proclin300 and 50% Glycerol.
Store at 4°C for short term. Store at -20°C for long term. Avoid repeated freeze/thaw cycles.**Background:** Interconverts simultaneously and stereospecifically pyruvate and lactate with concomitant interconversion of NADH and NAD⁺.**Applications:** **WB** (1:500-2000)
IHC-P (1:50-200)
IHC-F (1:50-200)
IF (1:50-200)
Flow-Cyt (1:20-50)
ICC/IF (1:50-200)
IP (1:20-50)**Reactivity:** Human, Mouse, Rat**Predicted**
MW.: 37**Subcellular**
Location: Cytoplasm**— VALIDATION IMAGES —**

25 ug total protein per lane of various lysates (see on figure) probed with LDHA monoclonal antibody, unconjugated (bsm-62875R) at 1:1000 dilution and 4°C overnight incubation. Followed by conjugated secondary antibody incubation at r.t. for 60 min.



Paraformaldehyde-fixed, paraffin embedded Human Breast Cancer; Antigen retrieval by boiling in sodium citrate buffer (pH6.0) for 15 min; Antibody incubation with LDHA Monoclonal Antibody, Unconjugated(bsm-62875R) at 1:200 overnight at 4°C, followed by conjugation to the bs-0295G-HRP and DAB (C-0010) staining.



Paraformaldehyde-fixed, paraffin embedded Human Colon Cancer; Antigen retrieval by boiling in sodium citrate buffer (pH6.0) for 15 min; Antibody incubation with LDHA Monoclonal Antibody, Unconjugated(bsm-62875R) at 1:200 overnight at 4°C, followed by conjugation to the bs-0295G-HRP and DAB (C-0010) staining.