

bsm-62874R**[Primary Antibody]**

www.bioss.com.cn

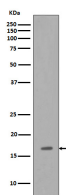
sales@bioss.com.cn

techsupport@bioss.com.cn

400-901-9800

Osteocalcin Recombinant Rabbit mAb**— DATASHEET —**

Host: Rabbit	Isotype: IgG	Applications: WB (1:500-2000)
Clonality: Recombinant		Reactivity: Human
GeneID: 632	SWISS: P02818	
Target: Osteocalcin		
Immunogen: A synthesized peptide derived from human Osteocalcin: 50-100/100.		Predicted MW.: 11
Purification: affinity purified by Protein A		Subcellular Location: Secreted
Storage: 10mM phosphate buffered saline(pH 7.4) with 150mM sodium chloride, 0.05% BSA, 0.02% Proclin300 and 50% glycerol. Store at 4°C for short term. Store at -20°C for long term. Avoid repeated freeze/thaw cycles.		
Background: Bone protein that constitutes 1-2% of the total bone protein, and which acts as a negative regulator of bone formation. Functions to limit bone formation without impairing bone resorption or mineralization (By similarity). It binds strongly to apatite and calcium.		

— VALIDATION IMAGES —

Western blot analysis of Human articular cartilage tissue lysate. Using Osteocalcin (bsm-62874R) monoclonal antibody at 1:1000 dilution and 4°C overnight incubation. Followed by conjugated secondary antibody incubation at r.t. for 60 min.

— SELECTED CITATIONS —

- **[IF=3.5]** Li Lan. et al. Mechanically induced M2 macrophages are involved in bone remodeling of the midpalatal suture during palatal expansion. PROG ORTHOD. 2024 Dec;25(1):1-12 IHC ;Rat. 39098934