

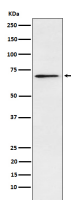
bsm-62873R**[Primary Antibody]****BioSS**
ANTIBODIES

www.bioss.com.cn

sales@bioss.com.cn

techsupport@bioss.com.cn

400-901-9800

Plastin L Recombinant Rabbit mAb**DATASHEET****Host:** Rabbit**Isotype:** IgG**Clonality:** Recombinant**GeneID:** 3936**SWISS:** P13796**Target:** Plastin L**Immunogen:** A synthesized peptide derived from human Plastin 2: 560-600.**Purification:** affinity purified by Protein A**Storage:** 10mM phosphate buffered saline(pH 7.4) with 150mM sodium chloride, 0.05% BSA, 0.02% Proclin300 and 50% glycerol.
Store at 4°C for short term. Store at -20°C for long term. Avoid repeated freeze/thaw cycles.**Background:** Actin-binding protein. Plays a role in the activation of T-cells in response to costimulation through TCR/CD3 and CD2 or CD28. Modulates the cell surface expression of IL2RA/CD25 and CD69.**Applications:** **WB** (1:1000-1:2000)**IHC-P** (1:100-1:200)**IHC-F** (1:100-1:200)**IF** (1:50-1:200)**Flow-Cyt** (1:20-1:100)**ICC/IF** (1:50-1:200)**IP** (1:20-1:50)**Reactivity:** Human**Predicted**
MW.: 70**Subcellular**
Location: Cell membrane ,Cytoplasm**VALIDATION IMAGES**

Western blot analysis of Jurkat cell lysate. Using Plastin L (bsm-62873R) monoclonal antibody at 1:1000 dilution and 4°C overnight incubation. Followed by conjugated secondary antibody incubation at r.t. for 60 min.