

bsm-62863R

[Primary Antibody]

Phospho-MAP2 (Ser136) Recombinant Rabbit mAb

Bioss
ANTIBODIES

www.bioss.com.cn

sales@bioss.com.cn

techsupport@bioss.com.cn

400-901-9800

DATASHEET

Host: Rabbit

Isotype: IgG

Clonality: Recombinant

CloneNo.: 19F17

GeneID: 4133

SWISS: P11137

Target: Phospho-MAP2 (Ser136)

Immunogen: A synthesized peptide derived from human MAP2 around the phosphorylation site of S136: NLPP-pS-PPP(全长1827aa).

Purification: affinity purified by Protein A

Storage: 10mM phosphate buffered saline(pH 7.4) with 150mM sodium chloride, 0.05% BSA, 0.02% Proclin300 and 50% glycerol. Store at 4°C for short term. Store at -20°C for long term. Avoid repeated freeze/thaw cycles.

Background: The exact function of MAP2 is unknown but MAPs may stabilize the microtubules against depolymerization. They also seem to have a stiffening effect on microtubules.

Applications: WB (1:1000-1:2000)

IHC-P (1:100-1:200)

IHC-F (1:100-1:200)

IF (1:50-1:200)

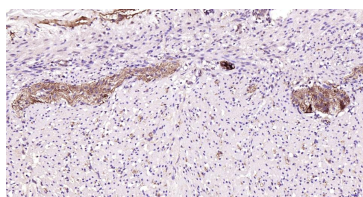
ICC/IF (1:50-1:200)

Reactivity: Human, Mouse, Rat

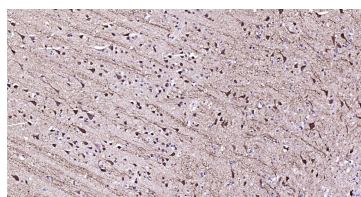
**Predicted
MW.:** 200

**Subcellular
Location:** Cytoplasm ,Nucleus

VALIDATION IMAGES



Paraformaldehyde-fixed, paraffin embedded Human colon; Antigen retrieval by boiling in sodium citrate buffer (pH6.0) for 15 min; Antibody incubation with Phospho-MAP2 (Ser136) Monoclonal Antibody, Unconjugated (bsm-62863R) at 1:200 overnight at 4°C, followed by conjugation to the bs-0295G-HRP and DAB (C-0010) staining.



Paraformaldehyde-fixed, paraffin embedded Human Brain; Antigen retrieval by boiling in sodium citrate buffer (pH6.0) for 15 min; Antibody incubation with Phospho-MAP2 (Ser136) Monoclonal Antibody, Unconjugated (bsm-62863R) at 1:200 overnight at 4°C, followed by conjugation to the bs-0295G-HRP and DAB (C-0010) staining.