

**bsm-62860R****[ Primary Antibody ]**

www.bioss.com.cn

sales@bioss.com.cn

techsupport@bioss.com.cn

400-901-9800

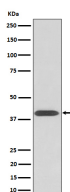
## Phospho-PKA C alpha/beta/gamma (T197) Recombinant Rabbit mAb

### — DATASHEET —

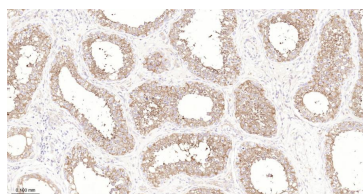
<b>Host:</b> Rabbit	<b>Isotype:</b> IgG
<b>Clonality:</b> Recombinant	<b>CloneNo.:</b> 5B5
<b>GeneID:</b> 5568	<b>SWISS:</b> P22612
<b>Target:</b> Phospho-PKA C alpha/beta/gamma (T197)	
<b>Immunogen:</b> A synthesized peptide derived from human PKA C alpha around the phosphorylation site of T197: RTW-pT-LCG.	
<b>Purification:</b> affinity purified by Protein A	
<b>Storage:</b> 10mM phosphate buffered saline(pH 7.4) with 150mM sodium chloride, 0.05% BSA, 0.02% Proclin300 and 50% glycerol. Store at 4°C for short term. Store at -20°C for long term. Avoid repeated freeze/thaw cycles.	
<b>Background:</b> Regulates the abundance of compartmentalized pools of its regulatory subunits through phosphorylation of PJA2 which binds and ubiquitinates these subunits, leading to their subsequent proteolysis.	

**Applications:** WB (1:500-2000)**IHC-P** (1:50-200)**IHC-F** (1:50-200)**IF** (1:50-200)**Reactivity:** Human, Mouse, Rat**Predicted  
MW.:** 40,41**Subcellular  
Location:** Cytoplasm ,Nucleus

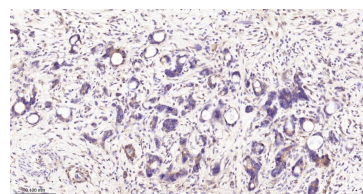
### — VALIDATION IMAGES —



Western blot analysis of HeLa cells, using ADCY1 antibody. Using Phospho-PKA C alpha/beta/gamma (T197) (bsm-62860R) monoclonal antibody at 1:1000 dilution and 4°C overnight incubation. Followed by conjugated secondary antibody incubation at r.t. for 60 min.



Paraformaldehyde-fixed, paraffin embedded Human Testis; Antigen retrieval by boiling in sodium citrate buffer (pH6.0) for 15 min; The section was incubated with Phospho-PKA C alpha/beta/gamma (T197) Monoclonal Antibody, Unconjugated (bsm-62860R) at 1:100 overnight at 4°C, followed by conjugation to the bs-0295G-HRP and DAB (C-0010) staining.



Paraformaldehyde-fixed, paraffin embedded Human Liver Cancer; Antigen retrieval by boiling in sodium citrate buffer (pH6.0) for 15 min; The section was incubated with Phospho-PKA C alpha/beta/gamma (T197) Monoclonal Antibody, Unconjugated (bsm-62860R) at 1:100 overnight at 4°C, followed by conjugation to the bs-0295G-HRP and DAB (C-0010) staining.