

bsm-62859R**[Primary Antibody]****KDM1/LSD1 Recombinant Rabbit mAb****BioSS**
ANTIBODIES

www.bioss.com.cn

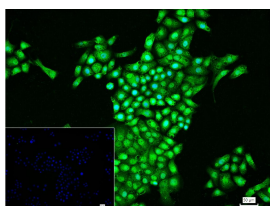
sales@bioss.com.cn

techsupport@bioss.com.cn

400-901-9800

— DATASHEET —

| | | |
|---|----------------------|---|
| Host: Rabbit | Isotype: IgG | Applications: Flow-Cyt (1:50-100) ICC/IF (1:50-200) Reactivity: Human Predicted MW.: 93 Subcellular Location: Nucleus |
| Clonality: Recombinant | CloneNo.: 7B6 | |
| GeneID: 23028 | SWISS: O60341 | |
| Target: KDM1/LSD1 | | |
| Immunogen: A synthesized peptide derived from human KDM1: 780-852/852. | | |
| Purification: affinity purified by Protein A | | |
| Storage: 10mM phosphate buffered saline(pH 7.4) with 150mM sodium chloride, 0.05% BSA, 0.02% Proclin300 and 50% glycerol. Store at 4°C for short term. Store at -20°C for long term. Avoid repeated freeze/thaw cycles. | | |
| Background: Histone demethylase that can demethylate both 'Lys-4' (H3K4me) and 'Lys-9' (H3K9me) of histone H3, thereby acting as a coactivator or a corepressor, depending on the context. Acts by oxidizing the substrate by FAD to generate the corresponding imine that is subsequently hydrolyzed. | | |

— VALIDATION IMAGES —

4% Paraformaldehyde-fixed MCF-7 (H) cell;
Triton X-100 at r.t. for 20 min; Antibody
incubation with (KDM1/LSD1) monoclonal
Antibody, unconjugated (bsm-62859R) 1:100, 90
min at 37°C; followed by conjugated Goat Anti-
Rabbit IgG antibody (green, bs-40295G-FITC) at
37°C for 90 min, DAPI (blue, C02-04002) was used
to stain the cell nuclei. PBS instead of the
primary antibody was used as the blank control.