

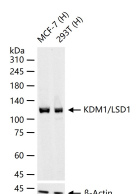
**bsm-62858R****[ Primary Antibody ]****KDM1/LSD1 Recombinant Rabbit mAb****Bioss**  
**ANTIBODIES**

www.bioss.com.cn

sales@bioss.com.cn

techsupport@bioss.com.cn

400-901-9800

**— DATASHEET —****Host:** Rabbit**Isotype:** IgG**Clonality:** Recombinant**CloneNo.:** 1A9**GeneID:** 23028**SWISS:** O60341**Target:** KDM1/LSD1**Applications:** **WB** (1:500-2000)  
**IP** (1:20-50)**Reactivity:** Human**Immunogen:** A synthesized peptide derived from human KDM1: 50-100.**Purification:** affinity purified by Protein A**Storage:** 10mM phosphate buffered saline(pH 7.4) with 150mM sodium chloride, 0.05% BSA, 0.02% Proclin300 and 50% glycerol. Store at 4°C for short term. Store at -20°C for long term. Avoid repeated freeze/thaw cycles.**Predicted  
MW.:** 93**Subcellular  
Location:** Nucleus**Background:** Histone demethylase that can demethylate both 'Lys-4' (H3K4me) and 'Lys-9' (H3K9me) of histone H3, thereby acting as a coactivator or a corepressor, depending on the context. Acts by oxidizing the substrate by FAD to generate the corresponding imine that is subsequently hydrolyzed.**— VALIDATION IMAGES —**

25 ug total protein per lane of various lysates  
(see on figure) probed with KDM1/LSD1  
monoclonal antibody, unconjugated  
(bsm-62858R) at 1:1000 dilution and 4°C  
overnight incubation. Followed by conjugated  
secondary antibody incubation at r.t. for 60 min.