

bsm-62856R**[Primary Antibody]****Bioss**
ANTIBODIES

www.bioss.com.cn

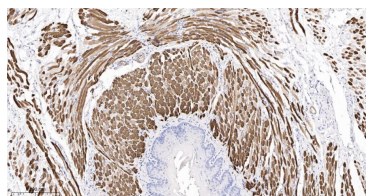
sales@bioss.com.cn

techsupport@bioss.com.cn

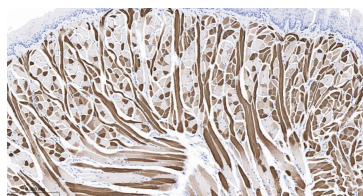
400-901-9800

Myosin heavy chain 2 Recombinant Rabbit mAb**— DATASHEET —**

Host: Rabbit	Isotype: IgG	Applications: WB (1:500-2000) IHC-P (1:100-500)
Clonality: Recombinant		
GeneID: 4620	SWISS: Q9UKX2	Reactivity: Human, Mouse, Rat
Target: Myosin heavy chain 2		
Immunogen: A synthesized peptide derived from human Myosin heavy chain 2: 50-100.		
Purification: affinity purified by Protein A		
Storage: 10mM phosphate buffered saline(pH 7.4) with 150mM sodium chloride, 0.05% BSA, 0.02% Proclin300 and 50% glycerol. Store at 4°C for short term. Store at -20°C for long term. Avoid repeated freeze/thaw cycles.		Predicted MW.: 223
Background: Muscle contraction. Required for cytoskeleton organization.		Subcellular Location: Cytoplasm

— VALIDATION IMAGES —

Paraformaldehyde-fixed, paraffin embedded Rat tongue; Antigen retrieval by boiling in sodium citrate buffer (pH6.0) for 15 min; The section was incubated with Myosin heavy chain 2 Monoclonal Antibody, Unconjugated (bsm-62856R) at 1:200 overnight at 4°C, followed by conjugation to the bs-0295G-HRP and DAB (C-0010) staining.



Paraformaldehyde-fixed, paraffin embedded Mouse tongue; Antigen retrieval by boiling in sodium citrate buffer (pH6.0) for 15 min; The section was incubated with Myosin heavy chain 2 Monoclonal Antibody, Unconjugated (bsm-62856R) at 1:200 overnight at 4°C, followed by conjugation to the bs-0295G-HRP and DAB (C-0010) staining.