

bsm-62853R**[Primary Antibody]**

phospho-eIF4EBP1/2/3(Thr46/Thr46/Thr32) Recombinant Rabbit mAb

Bioss
ANTIBODIES

www.bioss.com.cn

sales@bioss.com.cn

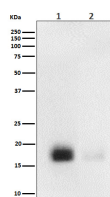
techsupport@bioss.com.cn

400-901-9800

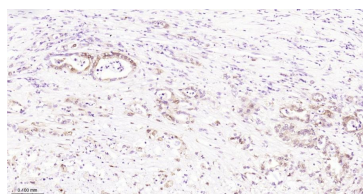
— DATASHEET —

Host: Rabbit	Isotype: IgG	Applications: WB (1:500-2000) IHC-P (1:50-200) IHC-F (1:50-200) IF (1:50-200) Reactivity: Human, Mouse Predicted MW.: 11,13 Subcellular Location: Cytoplasm ,Nucleus
Clonality: Recombinant	CloneNo.: 3A4	
GeneID: 1978	SWISS: Q13541	
Target: eIF4EBP1/2/3(Thr46/Thr46/Thr32)		
Immunogen: A synthesized peptide derived from human 4E BP1 around the phosphorylation site of T46: FST-pT-PGG.		
Purification: affinity purified by Protein A		
Storage: 10mM phosphate buffered saline(pH 7.4) with 150mM sodium chloride, 0.05% BSA, 0.02% Proclin300 and 50% glycerol. Store at 4°C for short term. Store at -20°C for long term. Avoid repeated freeze/thaw cycles.		
Background: eIF4EBP1 is a member of a family of translation repressor proteins. The protein directly interacts with eukaryotic translation initiation factor 4E (eIF4E), which is a limiting component of the multisubunit complex that recruits 40S ribosomal subunits to the 5' end of mRNAs.		

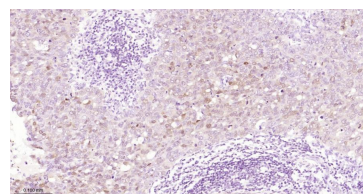
— VALIDATION IMAGES —



Western blot analysis of 293 treated with FBS+293. Using Phospho-eIF4EBP1/2/3(Thr46/Thr46/Thr32) (bsm-62853R) monoclonal antibody at 1:1000 dilution and 4°C overnight incubation. Followed by conjugated secondary antibody incubation at r.t. for 60 min.



Paraformaldehyde-fixed, paraffin embedded Human Pancreatic Cancer; Antigen retrieval by boiling in sodium citrate buffer (pH6.0) for 15 min; The section was incubated with Phospho-eIF4EBP1/2/3(Thr46/Thr46/Thr32) Monoclonal Antibody, Unconjugated (bsm-62853R) at 1:200 overnight at 4°C, followed by conjugation to the bs-0295G-HRP and DAB (C-0010) staining.



Paraformaldehyde-fixed, paraffin embedded Human Breast Cancer; Antigen retrieval by boiling in sodium citrate buffer (pH6.0) for 15 min; The section was incubated with Phospho-eIF4EBP1/2/3(Thr46/Thr46/Thr32) Monoclonal Antibody, Unconjugated (bsm-62853R) at 1:200 overnight at 4°C, followed by conjugation to the bs-0295G-HRP and DAB (C-0010) staining.