

bsm-62850R**[Primary Antibody]**

Pantophysin Recombinant Rabbit mAb

BioSS
ANTIBODIES

www.bioss.com.cn

sales@bioss.com.cn

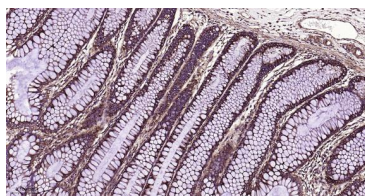
techsupport@bioss.com.cn

400-901-9800

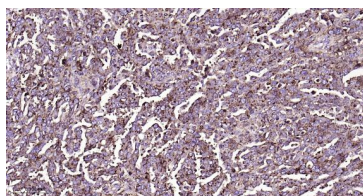
— DATASHEET —

| | | |
|--|------------------------|--|
| Host: Rabbit | Isotype: IgG | Applications: WB (1:1000-2000) IHC-P (1:100-500) IHC-F (1:100-500) IF (1:100-500) Reactivity: Human Predicted MW.: 29 Subcellular Location: Cell membrane ,Cytoplasm |
| Clonality: Recombinant | CloneNo.: 18D11 | |
| GeneID: 6856 | SWISS: Q16563 | |
| Target: Pantophysin | | |
| Immunogen: A synthesized peptide derived from human SYPL1: 150-259. | | |
| Purification: affinity purified by Protein A | | |
| Storage: 10mM phosphate buffered saline(pH 7.4) with 150mM sodium chloride, 0.05% BSA, 0.02% Proclin300 and 50% glycerol. Store at 4°C for short term. Store at -20°C for long term. Avoid repeated freeze/thaw cycles. | | |
| Background: Predicted to be involved in chemical synaptic transmission. Located in extracellular exosome. | | |

— VALIDATION IMAGES —



Paraformaldehyde-fixed, paraffin embedded Human Colon; Antigen retrieval by boiling in sodium citrate buffer (pH6.0) for 15 min; Antibody incubation Pantophysin Monoclonal Antibody, Unconjugated(bsm-62850R) at 1:200 overnight at 4°C, followed by conjugation to the bs-0295G-HRP and DAB (C-0010) staining.



Paraformaldehyde-fixed, paraffin embedded Human Ovarian Cancer; Antigen retrieval by boiling in sodium citrate buffer (pH6.0) for 15 min; Antibody incubation Pantophysin Monoclonal Antibody, Unconjugated(bsm-62850R) at 1:200 overnight at 4°C, followed by conjugation to the bs-0295G-HRP and DAB (C-0010) staining.