

bsm-62844R**[Primary Antibody]****Bioss**
ANTIBODIES

www.bioss.com.cn

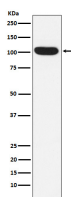
sales@bioss.com.cn

techsupport@bioss.com.cn

400-901-9800

ITCH/AIP4 Recombinant Rabbit mAb**— DATASHEET —**

Host: Rabbit	Isotype: IgG	Applications: WB (1:500-2000) IHC-P (1:50-200) IHC-F (1:50-200) IF (1:50-200) Reactivity: Human, Mouse, Rat Predicted MW.: 103 Subcellular Location: Cell membrane ,Cytoplasm ,Nucleus
Clonality: Recombinant		
GeneID: 83737	SWISS: Q96J02	
Target: ITCH/AIP4		
Immunogen: A synthesized peptide derived from human ITCH: 800-850.		
Purification: affinity purified by Protein A		
Storage: 10mM phosphate buffered saline(pH 7.4) with 150mM sodium chloride, 0.05% BSA, 0.02% Proclin300 and 50% glycerol. Store at 4°C for short term. Store at -20°C for long term. Avoid repeated freeze/thaw cycles.		
Background: Acts as an E3 ubiquitin-protein ligase which accepts ubiquitin from an E2 ubiquitin-conjugating enzyme in the form of a thioester and then directly transfers the ubiquitin to targeted substrates.		

— VALIDATION IMAGES —

Western blot analysis of K562 cell lysate. Using ITCH/AIP4 (bsm-62844R) monoclonal antibody at 1:1000 dilution and 4°C overnight incubation. Followed by conjugated secondary antibody incubation at r.t. for 60 min.