

bsm-62841R**[Primary Antibody]****phospho-PLB (Ser16) Recombinant Rabbit mAb****Bioss**
ANTIBODIES

www.bioss.com.cn

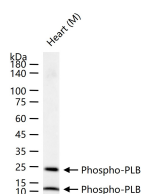
sales@bioss.com.cn

techsupport@bioss.com.cn

400-901-9800

— DATASHEET —

Host: Rabbit	Isotype: IgG	Applications: WB (1:500-2000) Reactivity: Mouse (predicted: Human) Predicted MW.: 6 Subcellular Location: Cell membrane ,Cytoplasm
Clonality: Recombinant	CloneNo.: 10H6	
GeneID: 5350	SWISS: P26678	
Target: PLB (Ser16)		
Immunogen: A synthesized peptide derived from human PLB around the phosphorylation site of S16: RA-pS-TIEM.		
Purification: affinity purified by Protein A		
Storage: 10mM phosphate buffered saline(pH 7.4) with 150mM sodium chloride, 0.05% BSA, 0.02% Proclin300 and 50% glycerol. Store at 4°C for short term. Store at -20°C for long term. Avoid repeated freeze/thaw cycles.		
Background: Reversibly inhibits the activity of ATP2A2 in cardiac sarcoplasmic reticulum by decreasing the apparent affinity of the ATPase for Ca(2+). Modulates the contractility of the heart muscle in response to physiological stimuli via its effects on ATP2A2.		

— VALIDATION IMAGES —

25 ug total protein per lane of various lysates
(see on figure) probed with Phospho-PLB (Ser16)
monoclonal antibody, unconjugated
(bsm-62841R) at 1:2000 dilution and 4°C
overnight incubation. Followed by conjugated
secondary antibody incubation at r.t. for 60 min.