

bsm-62835R**[Primary Antibody]****BioSS**
ANTIBODIES

www.bioss.com.cn

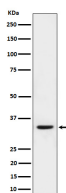
sales@bioss.com.cn

techsupport@bioss.com.cn

400-901-9800

Phospho-CDK1/2 (Thr161/Thr160) Recombinant Rabbit mAb**— DATASHEET —**

Host: Rabbit	Isotype: IgG	Applications: WB (1:1000-1:2000)
Clonality: Recombinant		Reactivity: Human
GeneID: 1017	SWISS: P24941	
Target: Phospho-CDK2 (Thr160)		
Immunogen: A synthesized peptide derived from human CDK1 around the phosphorylation site of T161: RTY-T(p)-HEV.		Predicted MW.: 34
Purification: affinity purified by Protein A		Subcellular Location: Cytoplasm ,Nucleus
Storage: 10mM phosphate buffered saline(pH 7.4) with 150mM sodium chloride, 0.05% BSA, 0.02% Proclin300 and 50% glycerol. Store at 4°C for short term. Store at -20°C for long term. Avoid repeated freeze/thaw cycles.		
Background: Serine/threonine-protein kinase involved in the control of the cell cycle; essential for meiosis, but dispensable for mitosis.		

— VALIDATION IMAGES —

Western blot analysis of HeLa treated with nocodazole cell lysate. Using Phospho-CDK2 (Thr160) (bsm-62835R) monoclonal antibody at 1:1000 dilution and 4°C overnight incubation. Followed by conjugated secondary antibody incubation at r.t. for 60 min.