

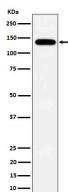
bsm-62830R**[Primary Antibody]****BioSS**
ANTIBODIES

www.bioss.com.cn

sales@bioss.com.cn

techsupport@bioss.com.cn

400-901-9800

TPP2 Recombinant Rabbit mAb**— DATASHEET —****Host:** Rabbit**Isotype:** IgG**Clonality:** Recombinant**GeneID:** 7174**SWISS:** P29144**Target:** TPP2**Immunogen:** A synthesized peptide derived from human TPP2: 900-1150.**Purification:** affinity purified by Protein A**Storage:** 10mM phosphate buffered saline(pH 7.4) with 150mM sodium chloride, 0.05% BSA, 0.02% Proclin300 and 50% glycerol. Store at 4°C for short term. Store at -20°C for long term. Avoid repeated freeze/thaw cycles.**Background:** Tripeptidyl peptidase II is a component of the proteolytic cascade acting downstream of the 26S proteasome in the ubiquitin-proteasome pathway. It may be able to complement the 26S proteasome function to some extent under conditions in which the latter is inhibited.**Applications:** WB (1:1000-2000)**IHC-P** (1:100-200)**IHC-F** (1:100-200)**IF** (1:50-200)**Flow-Cyt** (1:50-100)**ICC/IF** (1:50-200)**Reactivity:** Human, Mouse, Rat**Predicted
MW.:** 138**Subcellular
Location:** Cytoplasm**— VALIDATION IMAGES —**

Western blot analysis of HepG2 cell lysate. Using TPP2 (bsm-62830R) monoclonal antibody at 1:1000 dilution and 4°C overnight incubation. Followed by conjugated secondary antibody incubation at r.t. for 60 min.