

bsm-62827R**[Primary Antibody]****Bioss**
ANTIBODIES

www.bioss.com.cn

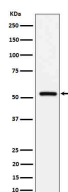
sales@bioss.com.cn

techsupport@bioss.com.cn

400-901-9800

Fetuin beta Recombinant Rabbit mAb**— DATASHEET —**

Host: Rabbit	Isotype: IgG	Applications: WB (1:1000-1:2000) IHC-P (1:100-1:200) IHC-F (1:100-1:200) IF (1:100-1:200) Reactivity: Human, Rat Predicted MW.: 42 Subcellular Location: Secreted
Clonality: Recombinant		
GeneID: 26998	SWISS: Q9UGM5	
Target: Fetuin beta		
Immunogen: A synthesized peptide derived from human Fetuin B: 200-382.		
Purification: affinity purified by Protein A		
Storage: 10mM phosphate buffered saline(pH 7.4) with 150mM sodium chloride, 0.05% BSA, 0.02% Proclin300 and 50% glycerol. Store at 4°C for short term. Store at -20°C for long term. Avoid repeated freeze/thaw cycles.		
Background: Protease inhibitor required for egg fertilization. Required to prevent premature zona pellucida hardening before fertilization, probably by inhibiting the protease activity of ASTL, a protease that mediates the cleavage of ZP2 and triggers zona pellucida hardening.		

— VALIDATION IMAGES —

Western blot analysis of human serum cell lysate. Using Fetuin beta (bsm-62827R) monoclonal antibody at 1:1000 dilution and 4°C overnight incubation. Followed by conjugated secondary antibody incubation at r.t. for 60 min.