

**bsm-62823R****[ Primary Antibody ]****Bioss**  
ANTIBODIES

www.bioss.com.cn

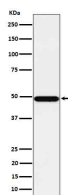
sales@bioss.com.cn

techsupport@bioss.com.cn

400-901-9800

**TBP7 Recombinant Rabbit mAb****— DATASHEET —**

<b>Host:</b> Rabbit	<b>Isotype:</b> IgG	<b>Applications:</b> WB (1:500-2000) ICC/IF (1:50-200) <b>Reactivity:</b> Human, Mouse, Rat  <b>Predicted MW.:</b> 47 <b>Subcellular Location:</b> Cytoplasm ,Nucleus
<b>Clonality:</b> Recombinant		
<b>GeneID:</b> 5704	<b>SWISS:</b> P43686	
<b>Target:</b> TBP7		
<b>Immunogen:</b> A synthesized peptide derived from human PSMC4: 350-418.		
<b>Purification:</b> affinity purified by Protein A		
<b>Storage:</b> 10mM phosphate buffered saline(pH 7.4) with 150mM sodium chloride, 0.05% BSA, 0.02% Proclin300 and 50% glycerol. Store at 4°C for short term. Store at -20°C for long term. Avoid repeated freeze/thaw cycles.		
<b>Background:</b> The 26S protease is involved in the ATP-dependent degradation of ubiquitinated proteins. The regulatory (or ATPase) complex confers ATP dependency and substrate specificity to the 26S complex.		

**— VALIDATION IMAGES —**

Western blot analysis of HeLa cell lysate. Using TBP7 (bsm-62823R) monoclonal antibody at 1:1000 dilution and 4°C overnight incubation. Followed by conjugated secondary antibody incubation at r.t. for 60 min.