

bsm-62822R**[Primary Antibody]****Ceruloplasmin Recombinant Rabbit mAb****Bioss**
ANTIBODIES

www.bioss.com.cn

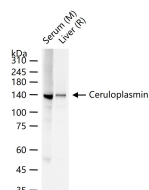
sales@bioss.com.cn

techsupport@bioss.com.cn

400-901-9800

— DATASHEET —

Host: Rabbit	Isotype: IgG	Applications: WB (1:500-1:2000) Reactivity: Mouse, Rat (predicted: Human) Predicted MW.: 122 Subcellular Location: Secreted
Clonality: Recombinant	CloneNo.: 5G11	
GeneID: 1356	SWISS: P00450	
Target: Ceruloplasmin		
Immunogen: A synthesized peptide derived from human Ceruloplasmin: 401-474.		
Purification: affinity purified by Protein A		
Storage: 10mM phosphate buffered saline(pH 7.4) with 150mM sodium chloride, 0.05% BSA, 0.02% Proclin300 and 50% glycerol. Store at 4°C for short term. Store at -20°C for long term. Avoid repeated freeze/thaw cycles.		
Background: Multifunctional blue, copper-binding (6-7 atoms per molecule) glycoprotein. It has ferroxidase activity oxidizing Fe ²⁺ to Fe ³⁺ without releasing radical oxygen species. It is involved in iron transport across the cell membrane.		

— VALIDATION IMAGES —

25 ug total protein per lane of various lysates
(see on figure) probed with Ceruloplasmin
monoclonal antibody, unconjugated
(bsm-62822R) at 1:1000 dilution and 4°C
overnight incubation. Followed by conjugated
secondary antibody incubation at r.t. for 60 min.