

bsm-62814R**[Primary Antibody]****BioSS**
ANTIBODIES

www.bioss.com.cn

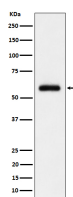
sales@bioss.com.cn

techsupport@bioss.com.cn

400-901-9800

TFIIE alpha Recombinant Rabbit mAb**— DATASHEET —**

Host: Rabbit	Isotype: IgG	Applications: WB (1:1000-1:2000) IHC-P (1:100-1:200) IHC-F (1:100-1:200) IF (1:100-1:200) Reactivity: Human, Mouse, Rat Predicted MW.: 49 Subcellular Location: Nucleus
Clonality: Recombinant		
GeneID: 2960	SWISS: P29083	
Target: TFIIE alpha		
Immunogen: A synthesized peptide derived from human TFIIE alpha: 400-439.		
Purification: affinity purified by Protein A		
Storage: 10mM phosphate buffered saline(pH 7.4) with 150mM sodium chloride, 0.05% BSA, 0.02% Proclin300 and 50% glycerol. Store at 4°C for short term. Store at -20°C for long term. Avoid repeated freeze/thaw cycles.		
Background: Recruits TFIIH to the initiation complex and stimulates the RNA polymerase II C-terminal domain kinase and DNA-dependent ATPase activities of TFIIH. Both TFIIH and TFIIE are required for promoter clearance by RNA polymerase.		

— VALIDATION IMAGES —

Western blot analysis of HeLa cell lysate. Using TFIIE alpha (bsm-62814R) monoclonal antibody at 1:1000 dilution and 4°C overnight incubation. Followed by conjugated secondary antibody incubation at r.t. for 60 min.