

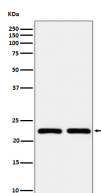
bsm-62812R**[Primary Antibody]****RAB22A Recombinant Rabbit mAb****Bioss**
ANTIBODIES

www.bioss.com.cn

sales@bioss.com.cn

techsupport@bioss.com.cn

400-901-9800

— DATASHEET —**Host:** Rabbit**Isotype:** IgG**Clonality:** Recombinant**GeneID:** 57403**SWISS:** Q9UL26**Target:** RAB22A**Immunogen:** A synthesized peptide derived from human Rab22A: 5-54.**Purification:** affinity purified by Protein A**Storage:** 10mM phosphate buffered saline(pH 7.4) with 150mM sodium chloride, 0.05% BSA, 0.02% Proclin300 and 50% glycerol. Store at 4°C for short term. Store at -20°C for long term. Avoid repeated freeze/thaw cycles.**Background:** Plays a role in endocytosis and intracellular protein transport. Mediates trafficking of TF from early endosomes to recycling endosomes. Required for NGF-mediated endocytosis of NTRK1, and subsequent neurite outgrowth. Binds GTP and GDP and has low GTPase activity. Alternates between a GTP-bound active form and a GDP-bound inactive form.**Applications:** **WB** (1:1000-1:2000)**ICC/IF** (1:50-1:200)**IP** (1:20-1:50)**Reactivity:** Human, Mouse, Rat**Predicted MW.:** 22**— VALIDATION IMAGES —**

Western blot analysis of (1) MCF-7 cell lysate; (2) BxPC-3 cell lysate. Using RAB22A (bsm-62812R) monoclonal antibody at 1:1000 dilution and 4°C overnight incubation. Followed by conjugated secondary antibody incubation at r.t. for 60 min.